

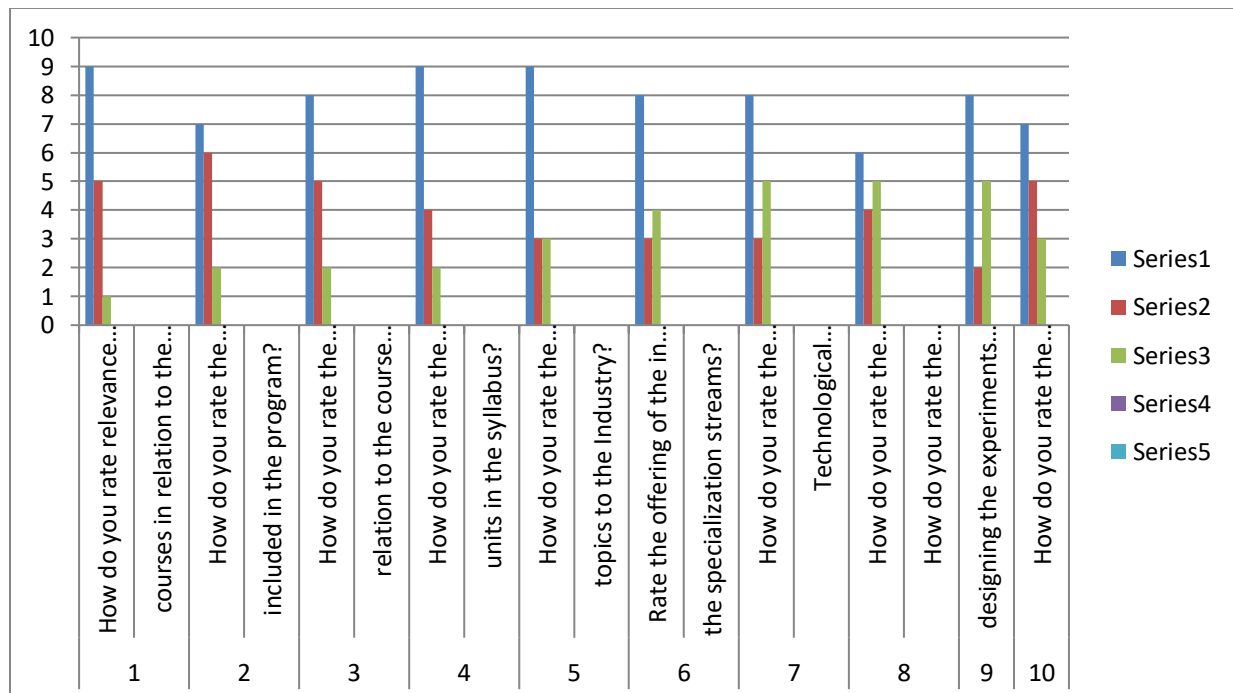


**BABA INSTITUTE OF TECHNOLOGY AND SCIENCES**  
 (Approved by AICTE New Delhi, NAAC Accredited, Affiliated to JNTU Kakinada, ISO 9001-2008 Certified)  
 Bakkannapalem Village, Madhurawada Post, Visakhapatnam – 530 048

**Department of Civil Engineering**

**EMPLOYERS FEEDBACK**

SRL NO	Question	Excellent	Very Good	Good	Average	Poor
1	How do you rate relevance of the courses in relation to the program?	9	5	1	0	0
2	How do you rate the sufficiency of the courses related to industry that are included in the program?	7	6	2	0	0
3	How do you rate the competencies in relation to the course content?	8	5	2	0	0
4	How do you rate the sequence of the units in the syllabus?	9	4	2	0	0
5	How do you rate the relevance of the topics to the Industry?	9	3	3	0	0
6	Rate the offering of the in relation to the specialization streams?	8	3	4	0	0
7	How do you rate the offering of the electives in relation to the Technological advancements?	8	3	5	0	0
8	How do you rate the courses which are skills related suiting to the Industry included into the programs?	6	4	5	0	0
9	How do you rate the applicability of the domains and the tools used for designing the experiments in terms of existing practices in the Industry?	8	2	5	0	0
10	How do you rate the experiments in terms of their relevance to the real life application?	7	5	3	0	0

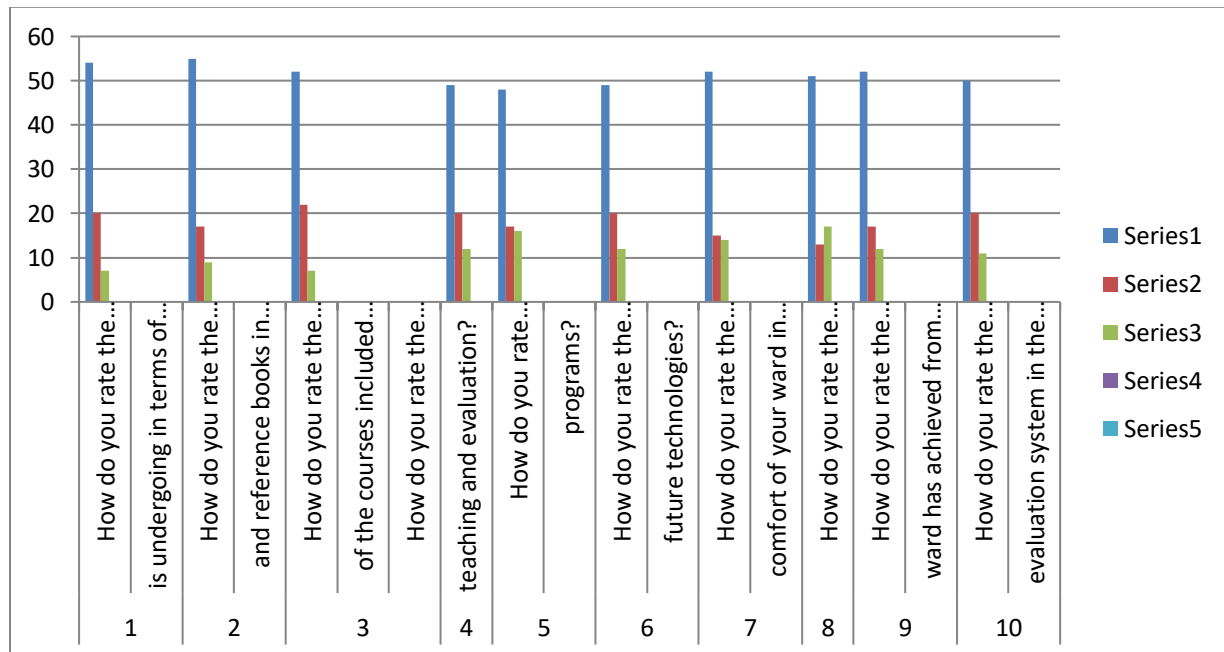




**BABA INSTITUTE OF TECHNOLOGY AND SCIENCES**  
 (Approved by AICTE New Delhi, NAAC Accredited, Affiliated to JNTU Kakinada, ISO 9001-2008 Certified)  
 Bakkannapalem Village, Madhurawada Post, Visakhapatnam – 530 048

PARENTS FEEDBACK

SRL NO	Question	Excellent	Very Good	Good	Average	Poor
1	How do you rate the program that your ward is undergoing in terms of the load of the courses in different semesters?	54	20	7	0	0
2	How do you rate the availability of the Text and reference books in the Market?	55	17	9	0	0
3	How do you rate the quality and relevance of the courses included into the semester?	52	22	7	0	0
4	How do you rate the treatment of the students by the faculty irrespective of the background of the student that includes Gender, cast, community creed etc. in teaching and evaluation?	49	20	12	0	0
5	How do you rate ambience of the university for effective delivery of the academic programs?	48	17	16	0	0
6	How do you rate the courses in terms of their relevance to the latest technologies or future technologies?	49	20	12	0	0
7	How do you rate the programs based on the comfort of your ward in coping with the workload?	52	15	14	0	0
8	How do you rate the quality of teaching in the university?	51	13	17	0	0
9	How do you rate the outcomes that your ward has achieved from the courses	52	17	12	0	0
10	How do you rate the transparency of the evaluation system in the University?	50	20	11	0	0

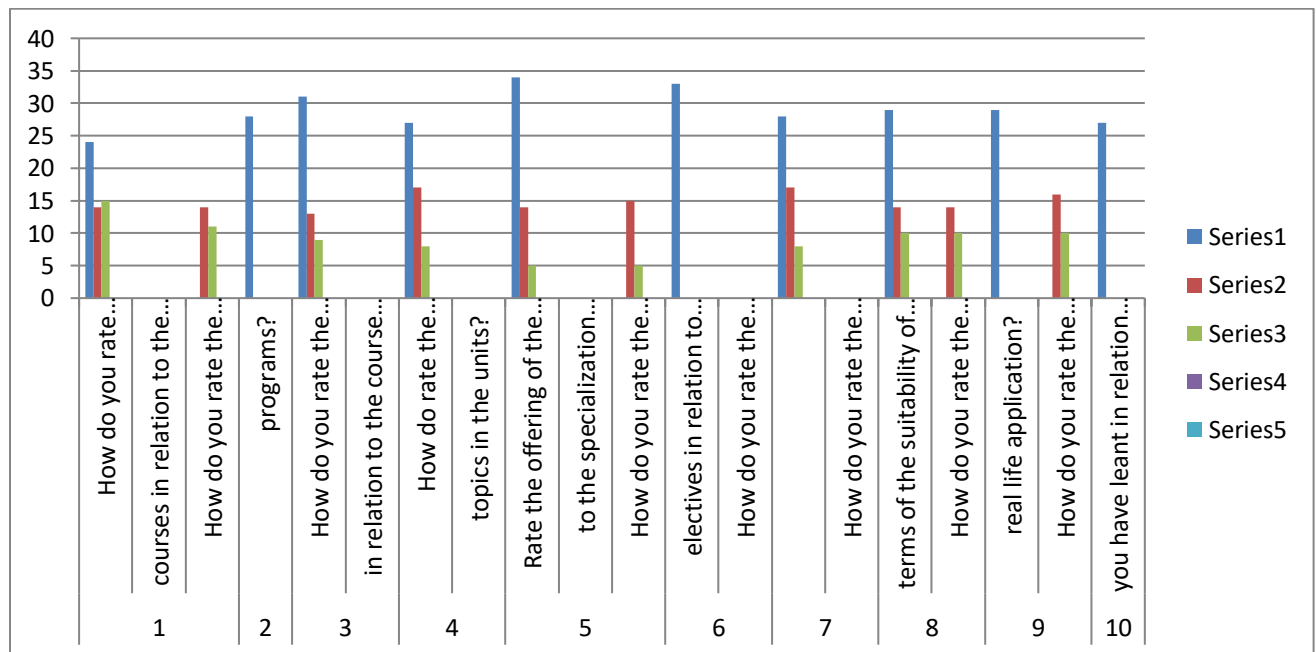




**BABA INSTITUTE OF TECHNOLOGY AND SCIENCES**  
 (Approved by AICTE New Delhi, NAAC Accredited, Affiliated to JNTU Kakinada, ISO 9001-2008 Certified)  
 Bakkannapalem Village, Madhurawada Post, Visakhapatnam – 530 048

ALUMNI FEEDBACK

SRL NO	Question	Excellent	Very Good	Good	Average	Poor
1	How do you rate relevance of the courses in relation to the program?	24	14	15	0	0
2	How do you rate the sequence of the courses included into the programs?	28	14	11	0	0
3	How do you rate the competencies in relation to the course content?	31	13	9	0	0
4	How do rate the sequence of the topics in the units?	27	17	8	0	0
5	Rate the offering of the in relation to the specialization streams?	34	14	5	0	0
6	How do you rate the offering of the electives in relation to the Technological advancements?	33	15	5	0	0
7	How do you rate the courses which are skills related suiting to the Industry included into the programs?	28	17	8	0	0
8	How do you rate the domain used for designing the experiments in terms of the suitability of the Tools to the domain?	29	14	10	0	0
9	How do you rate the experiments in terms of their relevance to the real life application?	29	14	10	0	0
10	How do you rate the courses that you have leant in relation to your current Job	27	16	10	0	0

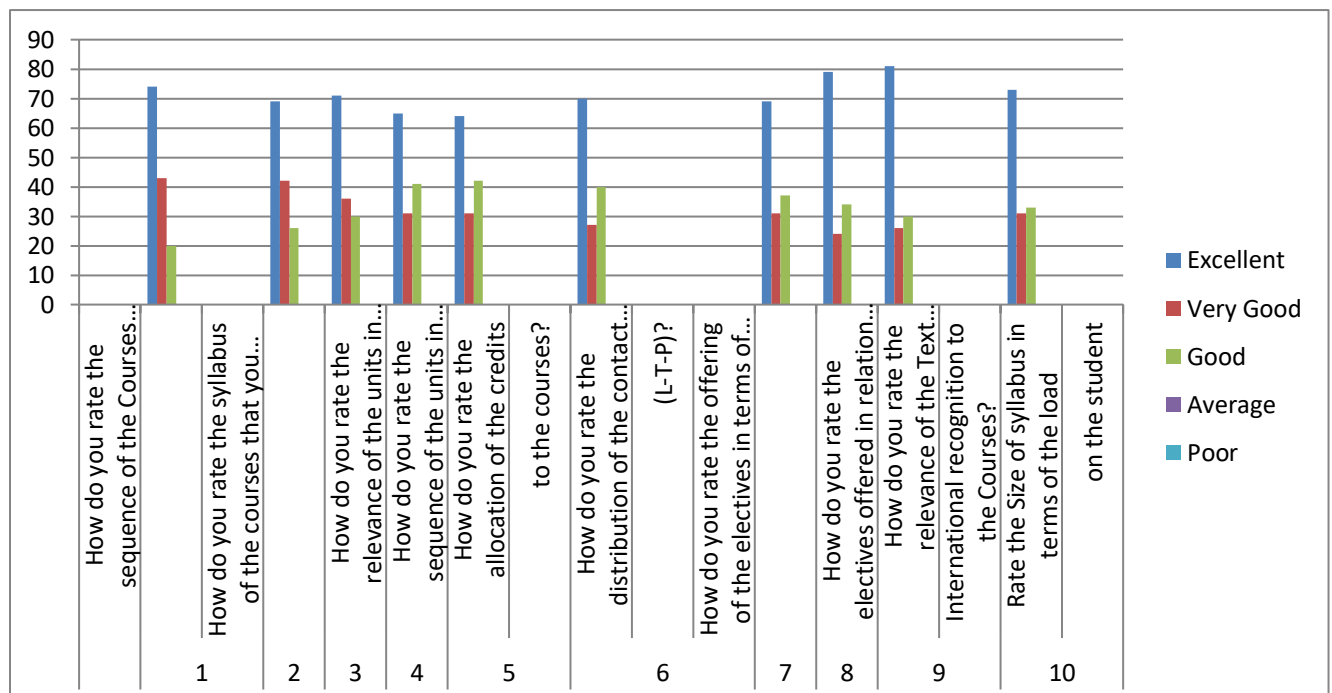




**BABA INSTITUTE OF TECHNOLOGY AND SCIENCES**  
 (Approved by AICTE New Delhi, NAAC Accredited, Affiliated to JNTU Kakinada, ISO 9001-2008 Certified)  
 Bakkannapalem Village, Madhurawada Post, Visakhapatnam – 530 048

STUDENTS FEEDBACK

SRL NO	Question	Excellent	Very Good	Good	Average	Poor
1	How do you rate the sequence of the Courses that you have studied are in sequence to what you have studied in the previous semester?	74	43	20	0	0
2	How do you rate the syllabus of the courses that you have studied in relation to the competencies expected out of the course?	69	42	26	0	0
3	How do you rate the relevance of the units in Syllabus relevant to the course?	71	36	30	0	0
4	How do you rate the sequence of the units in the course?	65	31	41	0	0
5	How do you rate the allocation of the credits to the courses?	64	31	42	0	0
6	How do you rate the distribution of the contact hours among the course components (L-T-P)?	70	27	40	0	0
7	How do you rate the offering of the electives in terms of their relevance to the specialization streams?	69	31	37	0	0
8	How do you rate the electives offered in relation to the Technological advancements?	79	24	34	0	0
9	How do you rate the relevance of the Text Books and reference books by their International recognition to the Courses?	81	26	30	0	0
10	Rate the Size of syllabus in terms of the load on the student	73	31	33	0	0

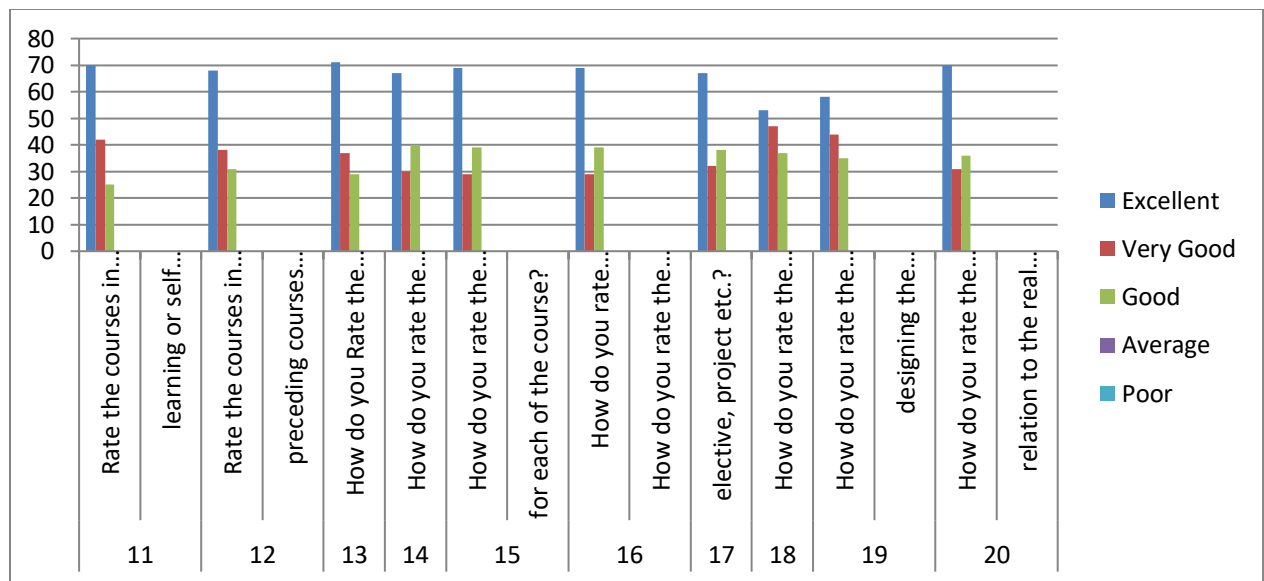




**BABA INSTITUTE OF TECHNOLOGY AND SCIENCES**  
 (Approved by AICTE New Delhi, NAAC Accredited, Affiliated to JNTU Kakinada, ISO 9001-2008 Certified)  
 Bakkannapalem Village, Madhurawada Post, Visakhapatnam – 530 048

STUDENTS FEEDBACK

SRL NO	Question	Excellent	Very Good	Good	Average	Poor
11	Rate the courses in terms of extra learning or self learning considering the design of the courses	70	42	25	0	0
12	Rate the courses in terms of sequence of offering considering whether the preceding courses have been covered.	68	38	31	0	0
13	How do you Rate the loading of the courses in a semester?	71	37	29	0	0
14	How do you rate the evaluation scheme designed for each of the course?	67	30	40	0	0
15	How do you rate the objectives stated for each of the course?	69	29	39	0	0
16	How do you rate competencies expected out of the course?	69	29	39	0	0
17	How do you rate the composition of the courses in terms of Basic science, Engineering science, Humanities, Discipline core, discipline elective, open elective, project etc.?	67	32	38	0	0
18	How do you rate the percentage of courses having LAB components?	53	47	37	0	0
19	How do you rate the domain used for designing the experiments for the LAB components?	58	44	35	0	0
20	How do you rate the experiments in relation to the real life Applications?	70	31	36	0	0

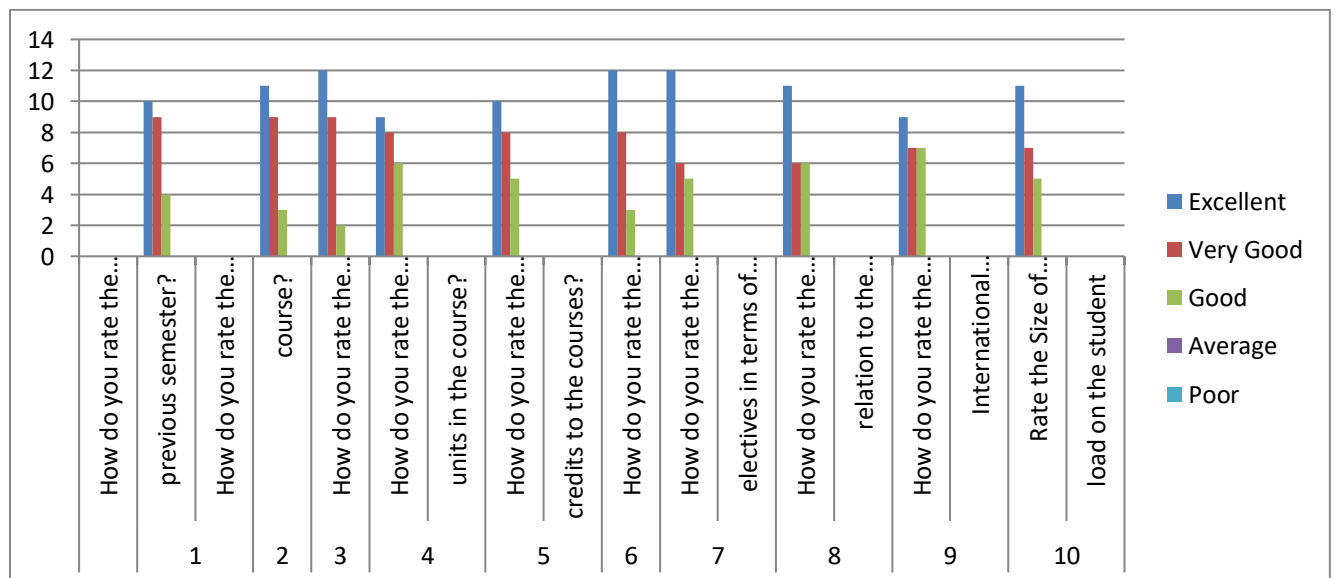




**BABA INSTITUTE OF TECHNOLOGY AND SCIENCES**  
 (Approved by AICTE New Delhi, NAAC Accredited, Affiliated to JNTU Kakinada, ISO 9001-2008 Certified)  
 Bakkannapalem Village, Madhurawada Post, Visakhapatnam – 530 048

TEACHERS FEEDBACK

SRL NO	Question	Excellent	Very Good	Good	Average	Poor
1	How do you rate the sequence of the Courses that you have studied are in sequence to what you have studied in the previous semester?	10	9	4	0	0
2	How do you rate the syllabus of the courses that you have studied in relation to the competencies expected out of the course?	11	9	3	0	0
3	How do you rate the relevance of the units in Syllabus relevant to the course?	12	9	2	0	0
4	How do you rate the sequence of the units in the course?	9	8	6	0	0
5	How do you rate the allocation of the credits to the courses?	10	8	5	0	0
6	How do you rate the distribution of the contact hours among the course components (L-T-P)?	12	8	3	0	0
7	How do you rate the offering of the electives in terms of their relevance to the specialization streams?	12	6	5	0	0
8	How do you rate the electives offered in relation to the Technological advancements?	11	6	6	0	0
9	How do you rate the relevance of the Text Books and reference books by their International recognition to the Courses?	9	7	7	0	0
10	Rate the Size of syllabus in terms of the load on the student	11	7	5	0	0

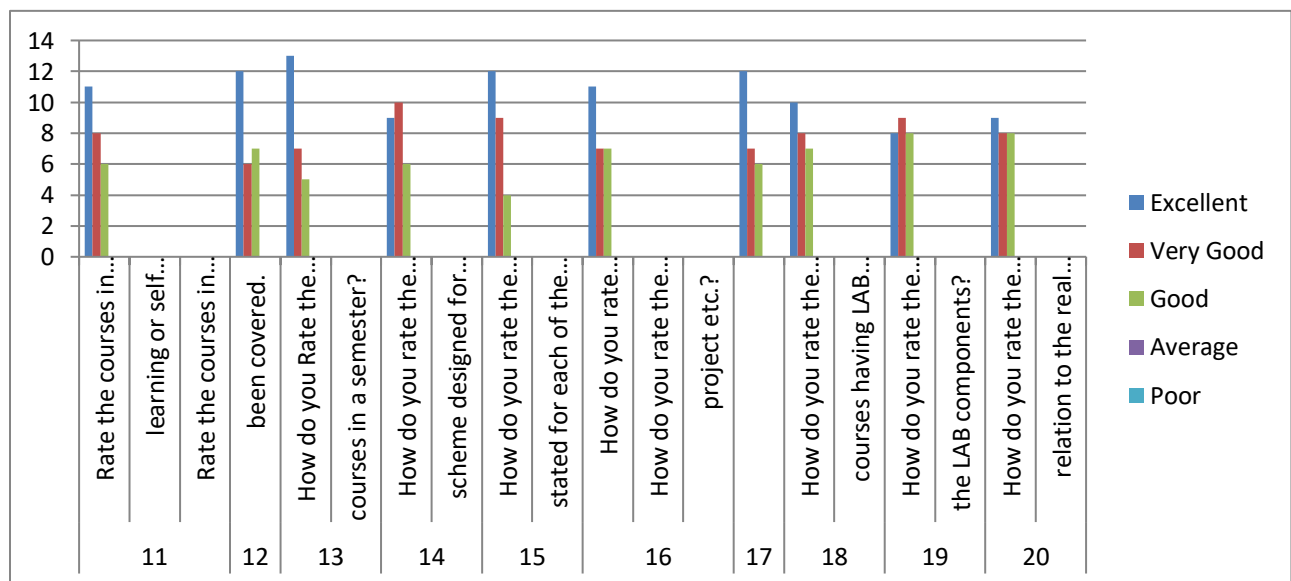




**BABA INSTITUTE OF TECHNOLOGY AND SCIENCES**  
 (Approved by AICTE New Delhi, NAAC Accredited, Affiliated to JNTU Kakinada, ISO 9001-2008 Certified)  
 Bakkannapalem Village, Madhurawada Post, Visakhapatnam - 530 048

TEACHERS FEEDBACK

SRL NO	Question	Excellent	Very Good	Good	Average	Poor
11	Rate the courses in terms of extra learning or self learning considering the design of the courses	11	8	6	0	0
12	Rate the courses in terms of sequence of offering considering whether the preceding courses have been covered.	12	6	7	0	0
13	How do you Rate the loading of the courses in a semester?	13	7	5	0	0
14	How do you rate the evaluation scheme designed for each of the course?	9	10	6	0	0
15	How do you rate the objectives stated for each of the course?	12	9	4	0	0
16	How do you rate competencies expected out of the course?	11	7	7	0	0
17	How do you rate the composition of the courses in terms of Basic science, Engineering science, Humanities, Discipline core, discipline elective, open elective, project etc.?	12	7	6	0	0
18	How do you rate the percentage of courses having LAB components?	10	8	7	0	0
19	How do you rate the domain used for designing the experiments for the LAB components?	8	9	8	0	0
20	How do you rate the experiments in relation to the real life Applications?	9	8	8	0	0



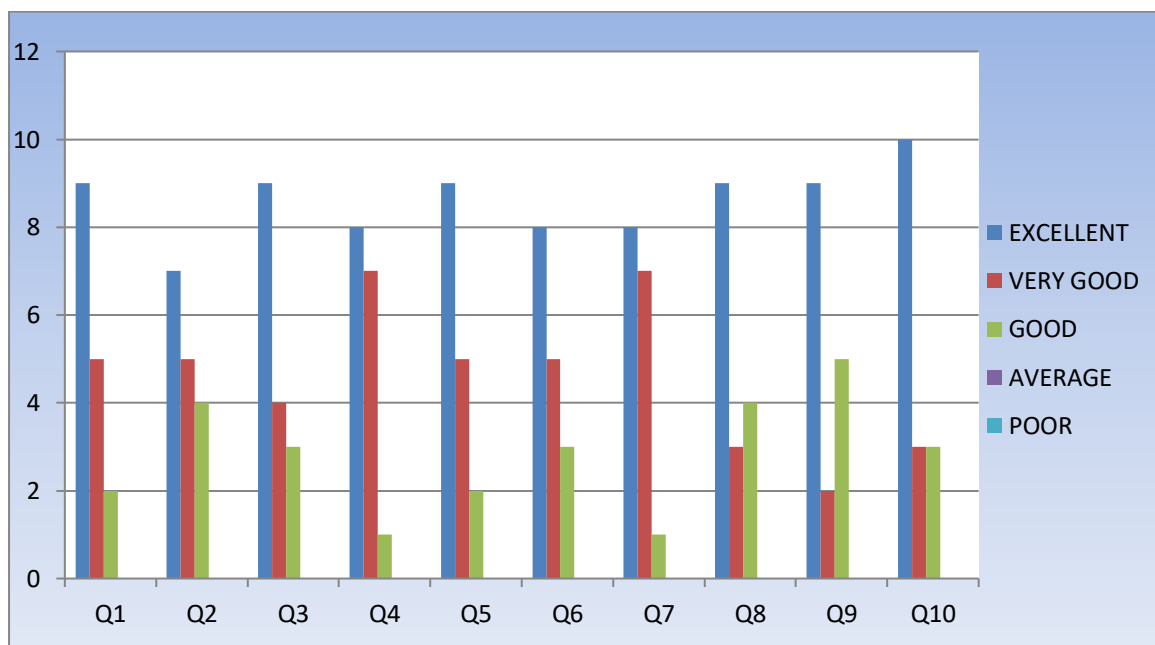


**BABA INSTITUTE OF TECHNOLOGY AND SCIENCES**  
 (Approved by AICTE New Delhi, NAAC Accredited, Affiliated to JNTU Kakinada, ISO 9001-2008 Certified)  
 Bakkannapalem Village, Madhurawada Post, Visakhapatnam – 530 048

**Department of Electrical and Electronics Engineering**

**EMPLOYERS FEEDBACK**

SRL NO	Question	Excellent	Very Good	Good	Average	Poor
1	How do you rate relevance of the courses in relation to the program?	9	5	2	0	0
2	How do you rate the sufficiency of the courses related to industry that are included in the program?	7	5	4	0	0
3	How do you rate the competencies in relation to the course content?	9	4	3	0	0
4	How do you rate the sequence of the units in the syllabus?	8	7	1	0	0
5	How do you rate the relevance of the topics to the Industry?	9	5	2	0	0
6	Rate the offering of the in relation to the specialization streams?	8	5	3	0	0
7	How do you rate the offering of the electives in relation to the Technological advancements?	8	7	1	0	0
8	How do you rate the courses which are skills related suiting to the Industry included into the programs?	9	3	4	0	0
9	How do you rate the applicability of the domains and the tools used for designing the experiments in terms of existing practices in the Industry?	9	2	5	0	0
10	How do you rate the experiments in terms of their relevance to the real life application?	10	3	3	0	0



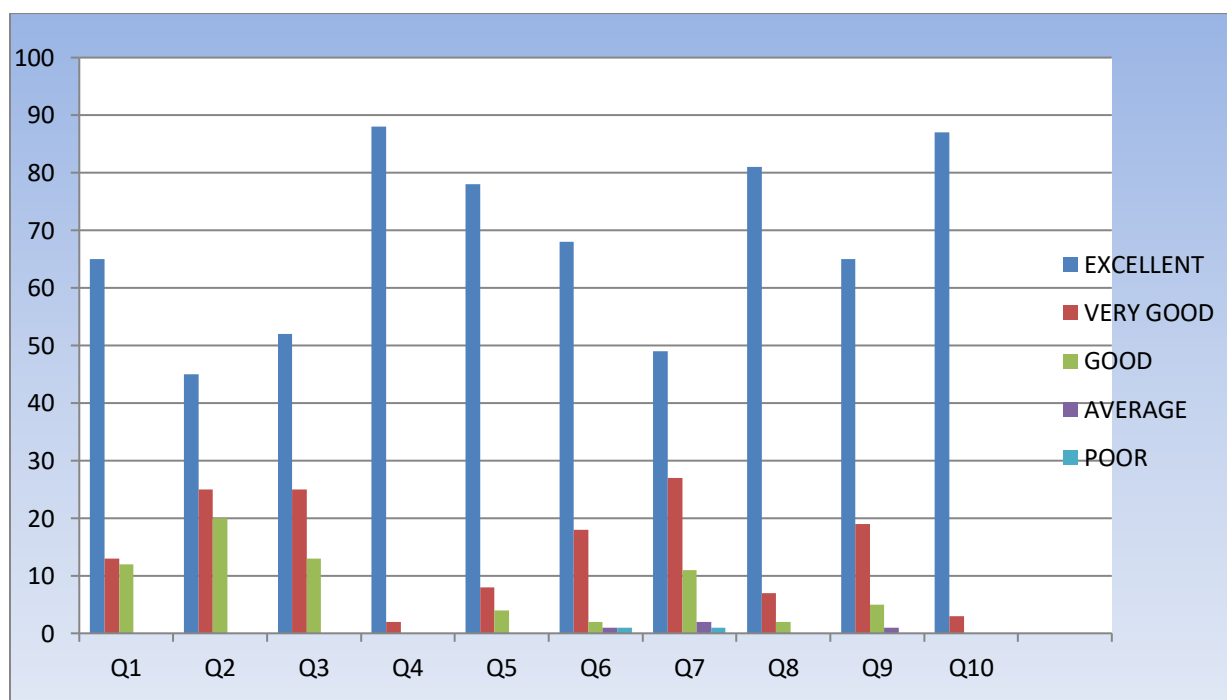




**BABA INSTITUTE OF TECHNOLOGY AND SCIENCES**  
 (Approved by AICTE New Delhi, NAAC Accredited, Affiliated to JNTU Kakinada, ISO 9001-2008 Certified)  
 Bakkannapalem Village, Madhurawada Post, Visakhapatnam – 530 048

PARENTS FEEDBACK

SRL NO	Question	Excellent	Very Good	Good	Average	Poor
1	How do you rate the program that your ward is undergoing in terms of the load of the courses in different semesters?	65	13	12	0	0
2	How do you rate the availability of the Text and reference books in the Market?	45	25	20	0	0
3	How do you rate the quality and relevance of the courses included into the semester?	52	25	13	0	0
4	How do you rate the treatment of the students by the faculty irrespective of the background of the teaching and evaluation?student that includes Gender, cast, community creed etc. in	88	2	0	0	0
5	How do you rate ambience of the university for effective delivery of the academic programs?	78	8	4	0	0
6	How do you rate the courses in terms of their relevance to the latest technologies or future technologies?	68	18	2	1	1
7	How do you rate the programs based on the comfort of your ward in coping with the workload?	49	27	11	2	1
8	How do you rate the quality of teaching in the university?	81	7	2	0	0
9	How do you rate the outcomes that your ward has achieved from the courses	65	19	5	1	0
10	How do you rate the transparency of the evaluation system in the University?	87	3	0	0	0

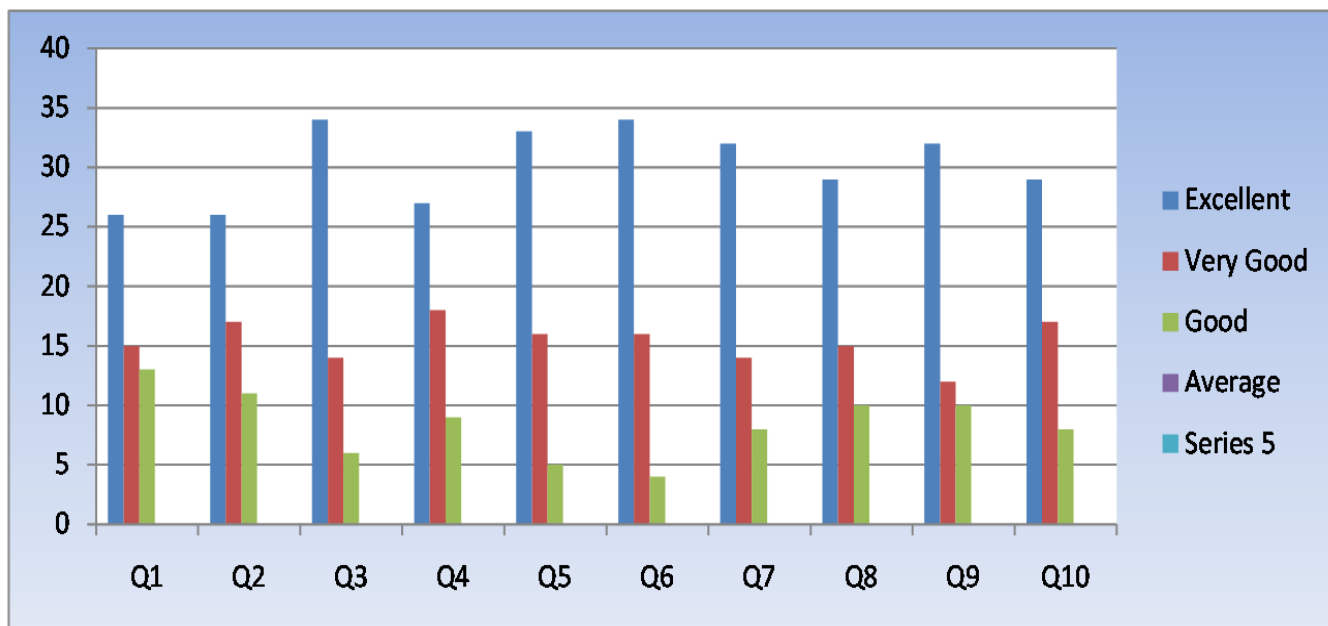




**BABA INSTITUTE OF TECHNOLOGY AND SCIENCES**  
 (Approved by AICTE New Delhi, NAAC Accredited, Affiliated to JNTU Kakinada, ISO 9001-2008 Certified)  
 Bakkannapalem Village, Madhurawada Post, Visakhapatnam – 530 048

ALUMNI FEEDBACK

S.NO	Question	Excellent	Very Good	Good	Average	Poor
1	How do you rate relevance of the courses in relation to the program?	26	15	13	0	0
2	How do you rate the sequence of the courses included into the programs?	26	17	11	0	0
3	How do you rate the competencies in relation to the course content?	34	14	6	0	0
4	How do rate the sequence of the topics in the units?	27	18	9	0	0
5	Rate the offering of the in relation to the specialization streams?	33	16	5	0	0
6	How do you rate the offering of the electives in relation to the Technological advancements?	34	16	4	0	0
7	How do you rate the courses which are skills related suiting to the Industry included into the programs?	32	14	8	0	0
8	How do you rate the domain used for designing the experiments in terms of the suitability of the Tools to the domain?	29	15	10	0	0
9	How do you rate the experiments in terms of their relevance to the real life application?	32	12	10	0	0
10	How do you rate the courses that you have leant in relation to your current Job	29	17	8	0	0





**BABA INSTITUTE OF TECHNOLOGY AND SCIENCES**  
(Approved by AICTE New Delhi, NAAC Accredited, Affiliated to JNTU Kakinada, ISO 9001-2008 Certified)  
Bakkannapalem Village, Madhurawada Post, Visakhapatnam – 530 048

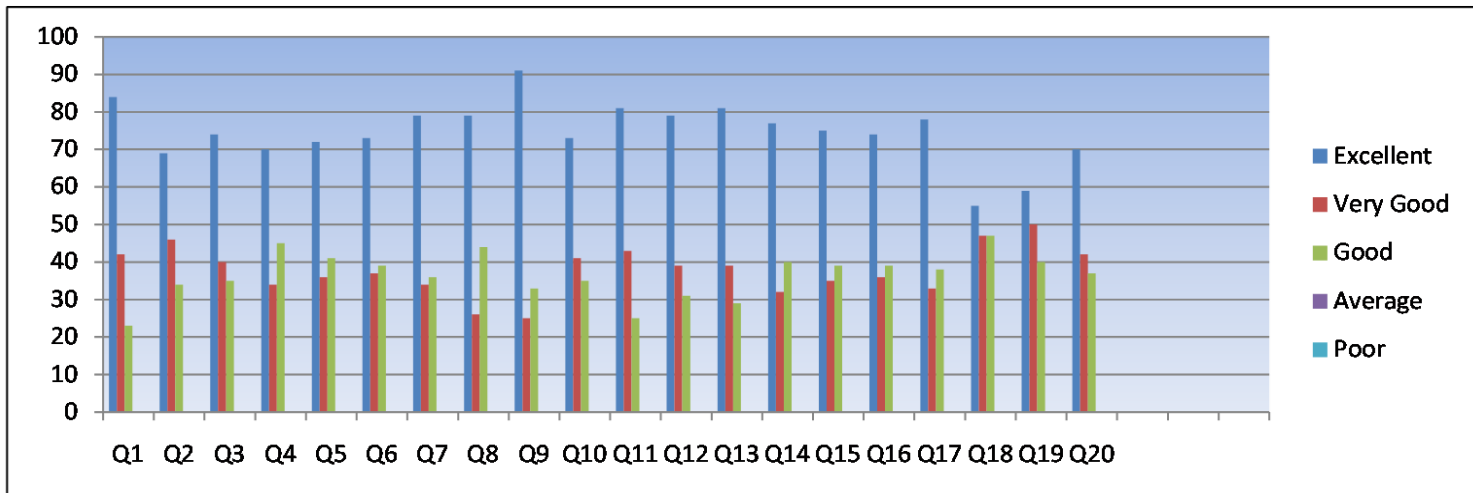
STUDENTS FEEDBACK

SRL NO	Question	Excellent	Very Good	Good	Average	Poor
1	How do you rate the sequence of the Courses that you have studied are in sequence to what you have studied in the previous semester?	84	42	23	0	0
2	How do you rate the syllabus of the courses that you have studied in relation to the competencies expected out of the course?	69	46	34	0	0
3	How do you rate the relevance of the units in Syllabus relevant to the course?	74	40	35	0	0
4	How do you rate the sequence of the units in the course?	70	34	45	0	0
5	How do you rate the allocation of the credits to the courses?	72	36	41	0	0
6	How do you rate the distribution of the contact hours among the course components (L-T-P)?	73	37	39	0	0
7	How do you rate the offering of the electives in terms of their relevance to the specialization streams?	79	34	36	0	0
8	How do you rate the electives offered in relation to the Technological advancements?	79	26	44	0	0
9	How do you rate the relevance of the Text Books and reference books by their International recognition to the Courses?	91	25	33	0	0
10	Rate the Size of syllabus in terms of the load on the student	73	41	35	0	0
11	Rate the courses in terms of extra learning or self learning considering the design of the courses	71	43	25	0	0
12	Rate the courses in terms of sequence of offering considering whether the preceding courses have been covered.	69	39	31	0	0
13	How do you Rate the loading of the courses in a semester?	71	39	29	0	0
14	How do you rate the evaluation scheme designed for each of the course?	67	32	40	0	0
15	How do you rate the objectives stated for each of the course?	69	31	39	0	0
16	How do you rate competencies expected out of the course?	70	30	39	0	0
17	How do you rate the composition of the courses in terms of Basic science, Engineering science, Humanities, Discipline core, discipline elective, open elective, project etc.?	69	32	38	0	0
18	How do you rate the percentage of courses having LAB components?	55	47	37	0	0
19	How do you rate the domain used for designing the experiments for the LAB components?	59	45	35	0	0
20	How do you rate the experiments in relation to the real life Applications?	70	32	37	0	0



**BABA INSTITUTE OF TECHNOLOGY AND SCIENCES**  
 (Approved by AICTE New Delhi, NAAC Accredited, Affiliated to JNTU Kakinada, ISO 9001-2008 Certified)  
 Bakkannapalem Village, Madhurawada Post, Visakhapatnam – 530 048

**STUDENTS FEEDBACK FORM**



**TEACHERS FEEDBACK FORM**

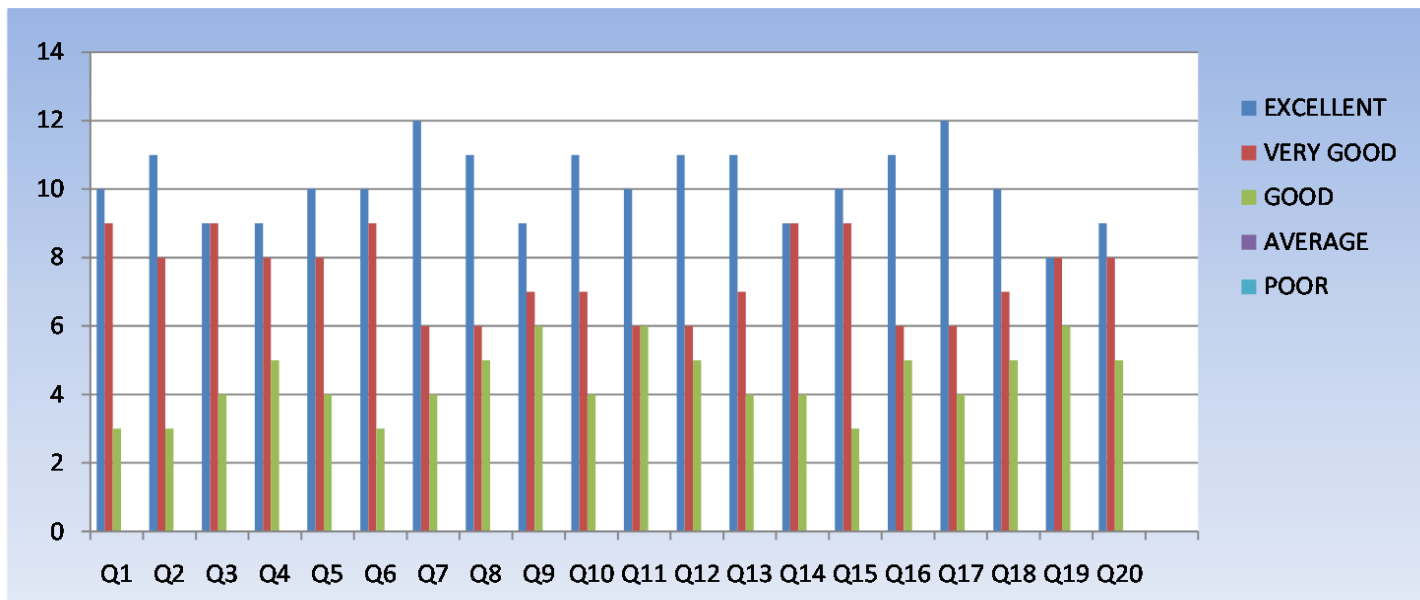
SRL NO	Question	Excellent	Very Good	Good	Average	Poor
1	How do you rate the sequence of the Courses that you have studied are in sequence to what you have studied in the previous semester?	10	9	3	0	0
2	How do you rate the syllabus of the courses that you have studied in relation to the competencies expected out of the course?	11	8	3	0	0
3	How do you rate the relevance of the units in Syllabus relevant to the course?	9	9	4	0	0
4	How do you rate the sequence of the units in the course?	9	8	5	0	0
5	How do you rate the allocation of the credits to the courses?	10	8	4	0	0
6	How do you rate the distribution of the contact hours among the course components (L-T-P)?	10	9	3	0	0
7	How do you rate the offering of the electives in terms of their relevance to the specialization streams?	12	6	4	0	0
8	How do you rate the electives offered in relation to the Technological advancements?	11	6	5	0	0
9	How do you rate the relevance of the Text Books and reference books by their International recognition to the Courses?	9	7	6	0	0
10	Rate the Size of syllabus in terms of the load on the student	11	7	4	0	0
11	Rate the courses in terms of extra learning or self learning considering the design of the courses	10	6	6	0	0
12	Rate the courses in terms of sequence of offering considering whether the preceding courses have been covered.	11	6	5	0	0



## BABA INSTITUTE OF TECHNOLOGY AND SCIENCES

(Approved by AICTE New Delhi, NAAC Accredited, Affiliated to JNTU Kakinada, ISO 9001-2008 Certified)  
Bakkannapalem Village, Madhurawada Post, Visakhapatnam – 530 048

13	How do you Rate the loading of the courses in a semester?	11	7	4	0	0
14	How do you rate the evaluation scheme designed for each of the course?	9	9	4	0	0
15	How do you rate the objectives stated for each of the course?	10	9	3	0	0
16	How do you rate competencies expected out of the course?	11	6	5	0	0
17	How do you rate the composition of the courses in terms of Basic science, Engineering science, Humanities, Discipline core, discipline elective, open elective, project etc.?	12	6	4	0	0
18	How do you rate the percentage of courses having LAB components?	10	7	5	0	0
19	How do you rate the domain used for designing the experiments for the LAB components?	8	8	6	0	0
20	How do you rate the experiments in relation to the real life Applications?	9	8	5	0	0

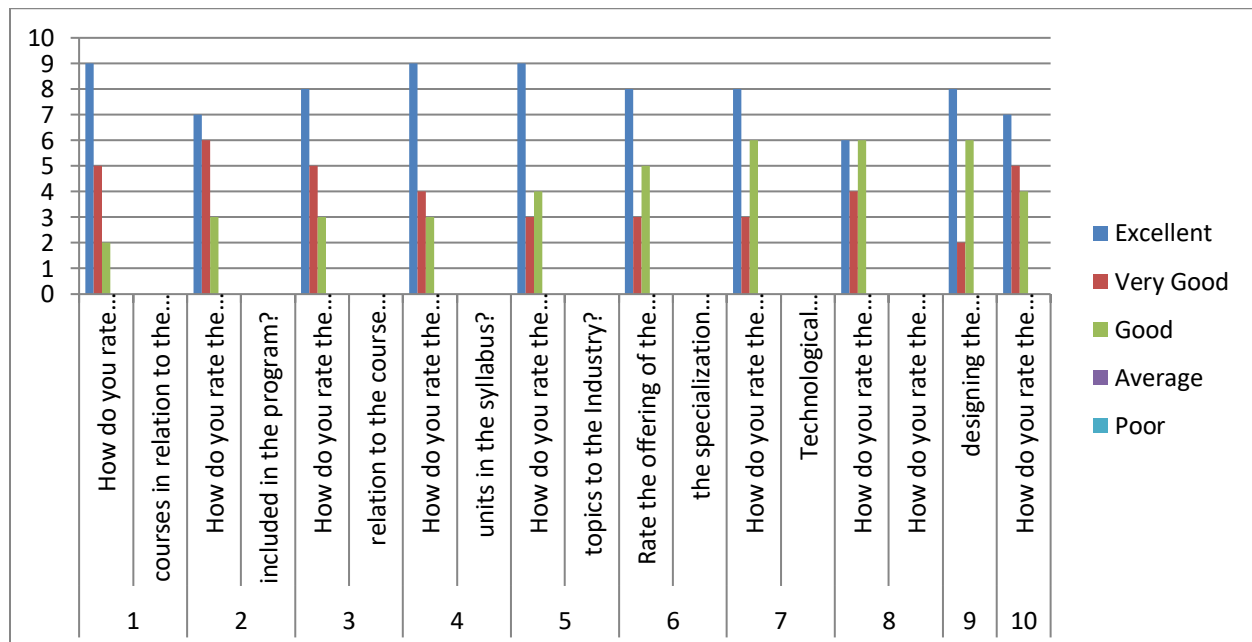




**Department of Mechanical Engineering**

**EMPLOYERS FEEDBACK**

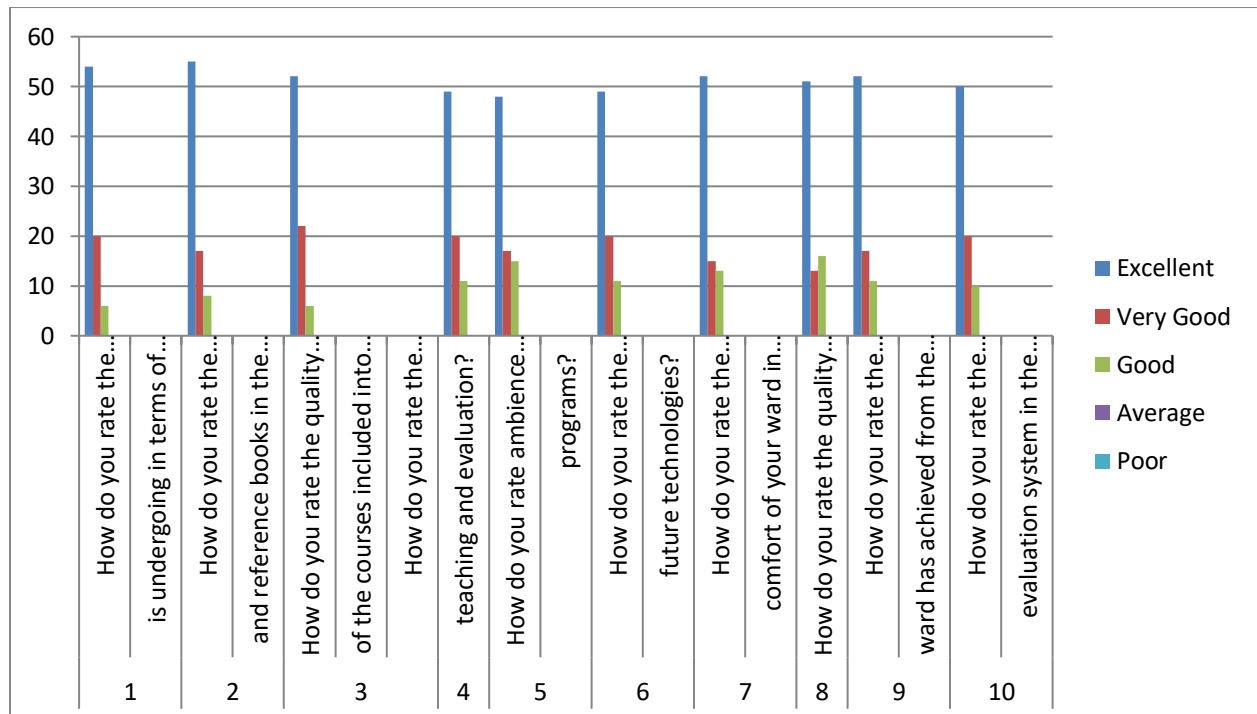
SRL NO	Question	Excellent	Very Good	Good	Average	Poor
1	How do you rate relevance of the courses in relation to the program?	9	5	2	0	0
2	How do you rate the sufficiency of the courses related to industry that are included in the program?	7	6	3	0	0
3	How do you rate the competencies in relation to the course content?	8	5	3	0	0
4	How do you rate the sequence of the units in the syllabus?	9	4	3	0	0
5	How do you rate the relevance of the topics to the Industry?	9	3	4	0	0
6	Rate the offering of the in relation to the specialization streams?	8	3	5	0	0
7	How do you rate the offering of the electives in relation to the Technological advancements?	8	3	6	0	0
8	How do you rate the courses which are skills related suiting to the Industry included into the programs?	6	4	6	0	0
9	How do you rate the applicability of the domains and the tools used for designing the experiments in terms of existing practices in the Industry?	8	2	6	0	0
10	How do you rate the experiments in terms of their relevance to the real life application?	7	5	4	0	0





PARENTS FEEDBACK

SRL NO	Question	Excellent	Very Good	Good	Average	Poor
1	How do you rate the program that your ward is undergoing in terms of the load of the courses in different semesters?	54	20	6	0	0
2	How do you rate the availability of the Text and reference books in the Market?	55	17	8	0	0
3	How do you rate the quality and relevance of the courses included into the semester?	52	22	6	0	0
4	How do you rate the treatment of the students by the faculty irrespective of the background of the student that includes Gender, cast, community creed etc. in teaching and evaluation?	49	20	11	0	0
5	How do you rate ambience of the university for effective delivery of the academic programs?	48	17	15	0	0
6	How do you rate the courses in terms of their relevance to the latest technologies or future technologies?	49	20	11	0	0
7	How do you rate the programs based on the comfort of your ward in coping with the workload?	52	15	13	0	0
8	How do you rate the quality of teaching in the university?	51	13	16	0	0
9	How do you rate the outcomes that your ward has achieved from the courses	52	17	11	0	0
10	How do you rate the transparency of the evaluation system in the University?	50	20	10	0	0

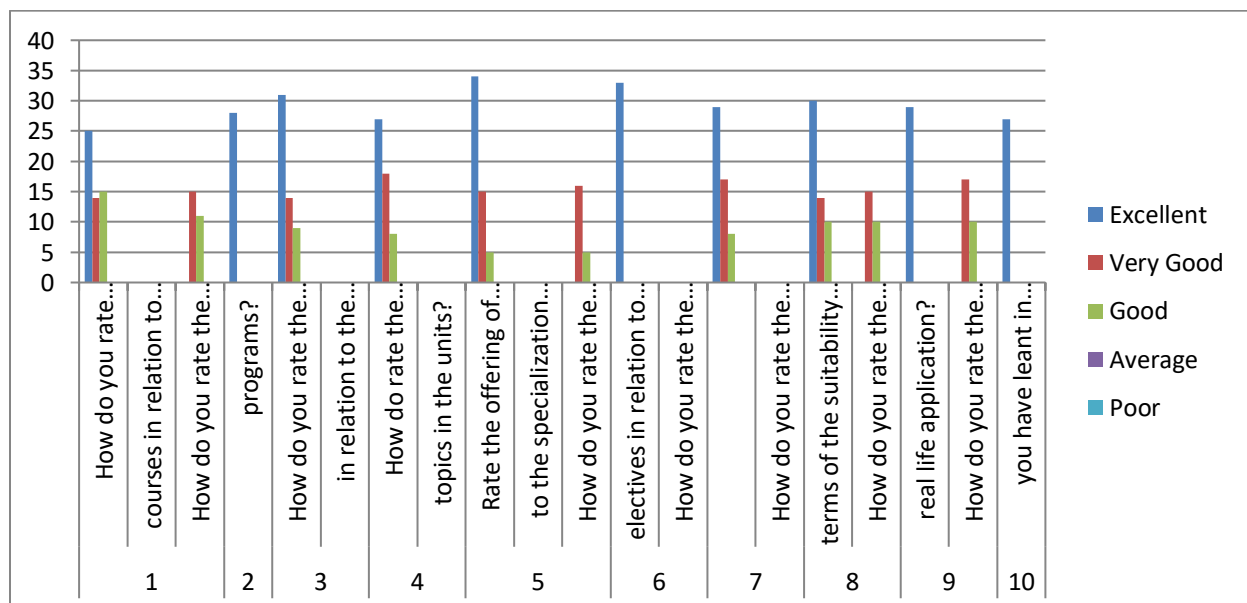




**BABA INSTITUTE OF TECHNOLOGY AND SCIENCES**  
 (Approved by AICTE New Delhi, NAAC Accredited, Affiliated to JNTU Kakinada, ISO 9001-2008 Certified)  
 Bakkannapalem Village, Madhurawada Post, Visakhapatnam – 530 048

ALUMNI FEEDBACK

SRL NO	Question	Excellent	Very Good	Good	Average	Poor
1	How do you rate relevance of the courses in relation to the program?	25	14	15	0	0
2	How do you rate the sequence of the courses included into the programs?	28	15	11	0	0
3	How do you rate the competencies in relation to the course content?	31	14	9	0	0
4	How do rate the sequence of the topics in the units?	27	18	8	0	0
5	Rate the offering of the in relation to the specialization streams?	34	15	5	0	0
6	How do you rate the offering of the electives in relation to the Technological advancements?	33	16	5	0	0
7	How do you rate the courses which are skills related suiting to the Industry included into the programs?	29	17	8	0	0
8	How do you rate the domain used for designing the experiments in terms of the suitability of the Tools to the domain?	30	14	10	0	0
9	How do you rate the experiments in terms of their relevance to the real life application?	29	15	10	0	0
10	How do you rate the courses that you have learnt in relation to your current Job	27	17	10	0	0



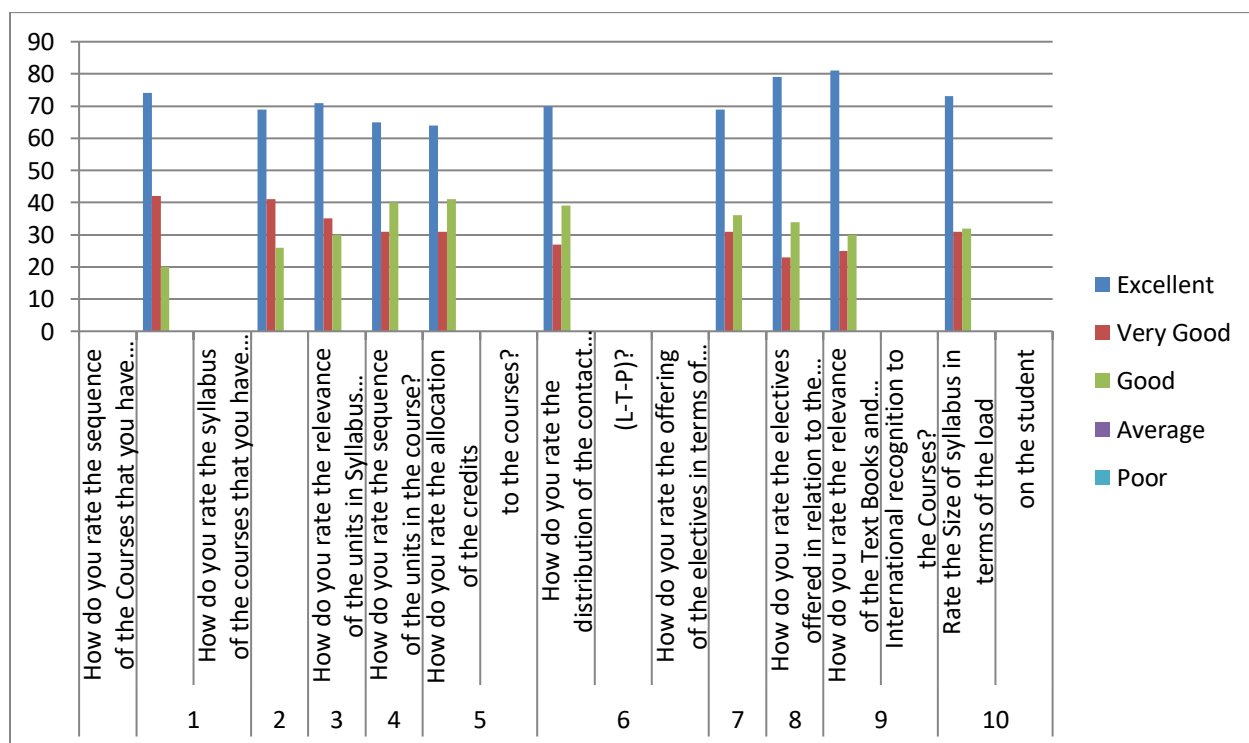




**BABA INSTITUTE OF TECHNOLOGY AND SCIENCES**  
 (Approved by AICTE New Delhi, NAAC Accredited, Affiliated to JNTU Kakinada, ISO 9001-2008 Certified)  
 Bakkannapalem Village, Madhurawada Post, Visakhapatnam – 530 048

STUDENTS FEEDBACK

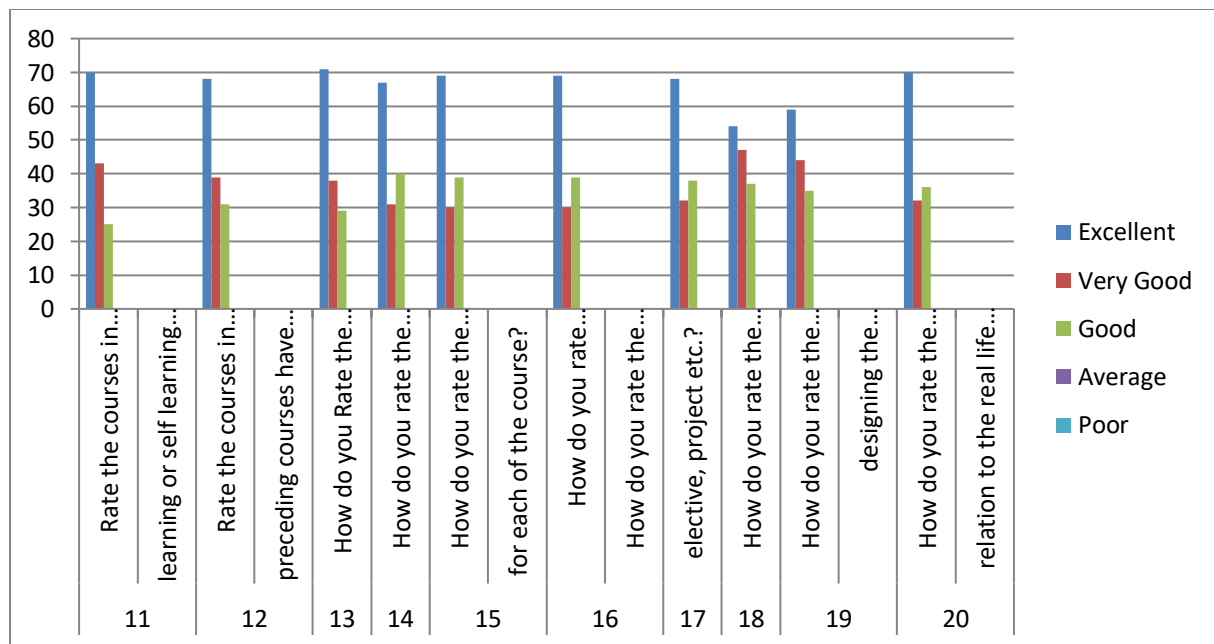
SRL NO	Question	Excellent	Very Good	Good	Average	Poor
1	How do you rate the sequence of the Courses that you have studied are in sequence to what you have studied in the previous semester?	74	42	20	0	0
2	How do you rate the syllabus of the courses that you have studied in relation to the competencies expected out of the course?	69	41	26	0	0
3	How do you rate the relevance of the units in Syllabus relevant to the course?	71	35	30	0	0
4	How do you rate the sequence of the units in the course?	65	31	40	0	0
5	How do you rate the allocation of the credits to the courses?	64	31	41	0	0
6	How do you rate the distribution of the contact hours among the course components (L-T-P)?	70	27	39	0	0
7	How do you rate the offering of the electives in terms of their relevance to the specialization streams?	69	31	36	0	0
8	How do you rate the electives offered in relation to the Technological advancements?	79	23	34	0	0
9	How do you rate the relevance of the Text Books and reference books by their International recognition to the Courses?	81	25	30	0	0
10	Rate the Size of syllabus in terms of the load on the student	73	31	32	0	0





STUDENTS FEEDBACK

SRL NO	Question	Excellent	Very Good	Good	Average	Poor
11	Rate the courses in terms of extra learning or self learning considering the design of the courses	70	43	25	0	0
12	Rate the courses in terms of sequence of offering considering whether the preceding courses have been covered.	68	39	31	0	0
13	How do you Rate the loading of the courses in a semester?	71	38	29	0	0
14	How do you rate the evaluation scheme designed for each of the course?	67	31	40	0	0
15	How do you rate the objectives stated for each of the course?	69	30	39	0	0
16	How do you rate competencies expected out of the course?	69	30	39	0	0
17	How do you rate the composition of the courses in terms of Basic science, Engineering science, Humanities, Discipline core, discipline elective, open elective, project etc.?	68	32	38	0	0
18	How do you rate the percentage of courses having LAB components?	54	47	37	0	0
19	How do you rate the domain used for designing the experiments for the LAB components?	59	44	35	0	0
20	How do you rate the experiments in relation to the real life Applications?	70	32	36	0	0

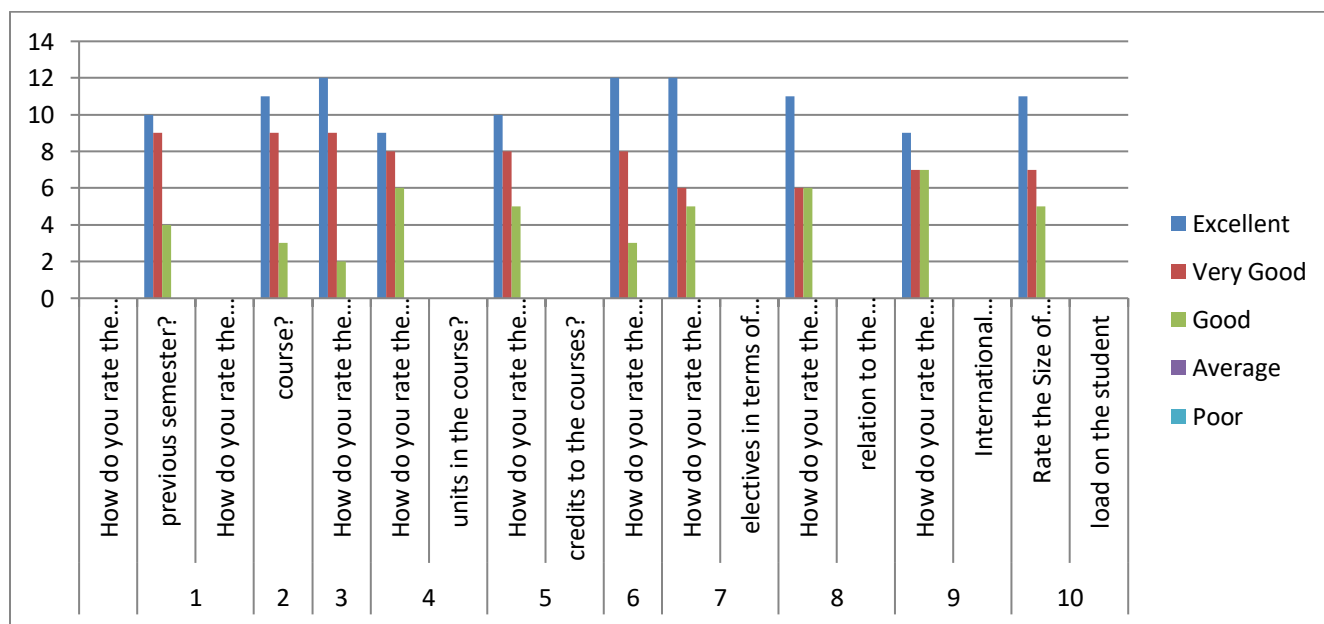




**BABA INSTITUTE OF TECHNOLOGY AND SCIENCES**  
 (Approved by AICTE New Delhi, NAAC Accredited, Affiliated to JNTU Kakinada, ISO 9001-2008 Certified)  
 Bakkannapalem Village, Madhurawada Post, Visakhapatnam – 530 048

TEACHERS FEEDBACK

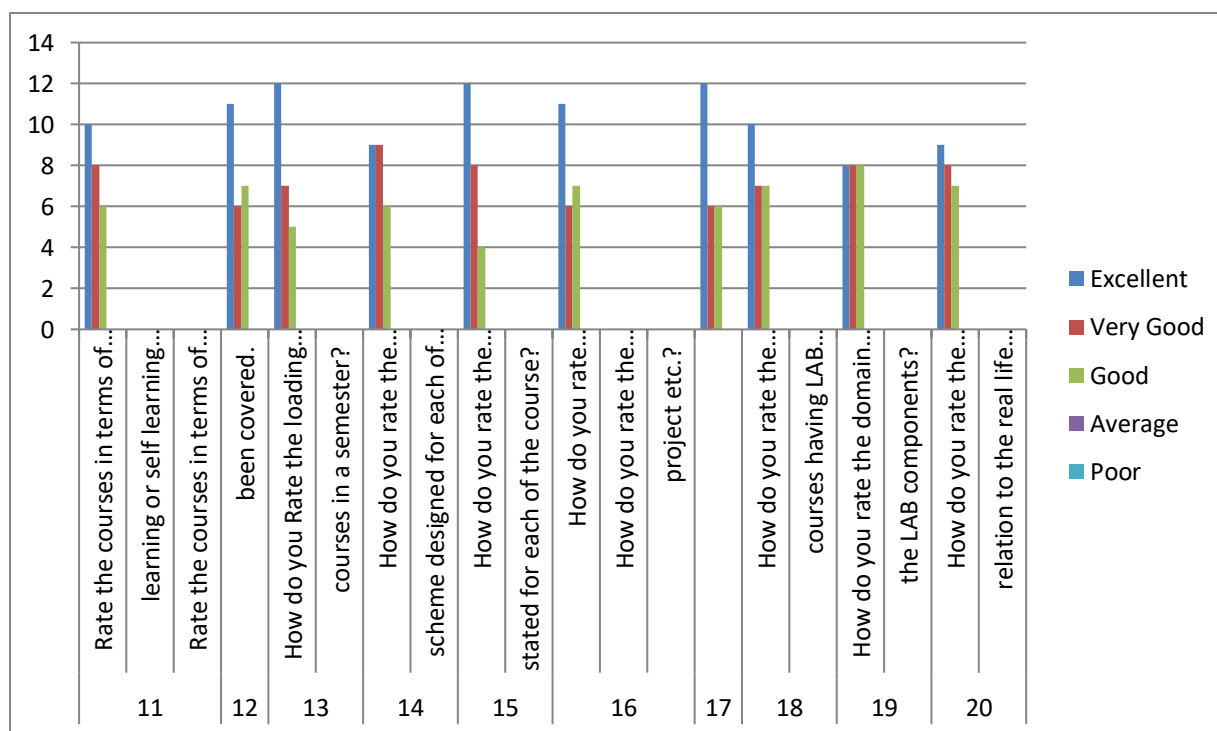
SRL NO	Question	Excellent	Very Good	Good	Average	Poor
1	How do you rate the sequence of the Courses that you have studied are in sequence to what you have studied in the previous semester?	10	9	4	0	0
2	How do you rate the syllabus of the courses that you have studied in relation to the competencies expected out of the course?	11	9	3	0	0
3	How do you rate the relevance of the units in Syllabus relevant to the course?	12	9	2	0	0
4	How do you rate the sequence of the units in the course?	9	8	6	0	0
5	How do you rate the allocation of the credits to the courses?	10	8	5	0	0
6	How do you rate the distribution of the contact hours among the course components (L-T-P)?	12	8	3	0	0
7	How do you rate the offering of the electives in terms of their relevance to the specialization streams?	12	6	5	0	0
8	How do you rate the electives offered in relation to the Technological advancements?	11	6	6	0	0
9	How do you rate the relevance of the Text Books and reference books by their International recognition to the Courses?	9	7	7	0	0
10	Rate the Size of syllabus in terms of the load on the student	11	7	5	0	0





TEACHERS FEEDBACK

SRL NO	Question	Excellent	Very Good	Good	Average	Poor
11	Rate the courses in terms of extra learning or self learning considering the design of the courses	10	8	6	0	0
12	Rate the courses in terms of sequence of offering considering whether the preceding courses have been covered.	11	6	7	0	0
13	How do you Rate the loading of the courses in a semester?	12	7	5	0	0
14	How do you rate the evaluation scheme designed for each of the course?	9	9	6	0	0
15	How do you rate the objectives stated for each of the course?	12	8	4	0	0
16	How do you rate competencies expected out of the course?	11	6	7	0	0
17	How do you rate the composition of the courses in terms of Basic science, Engineering science, Humanities, Discipline core, discipline elective, open elective, project etc.?	12	6	6	0	0
18	How do you rate the percentage of courses having LAB components?	10	7	7	0	0
19	How do you rate the domain used for designing the experiments for the LAB components?	8	8	8	0	0
20	How do you rate the experiments in relation to the real life Applications?	9	8	7	0	0

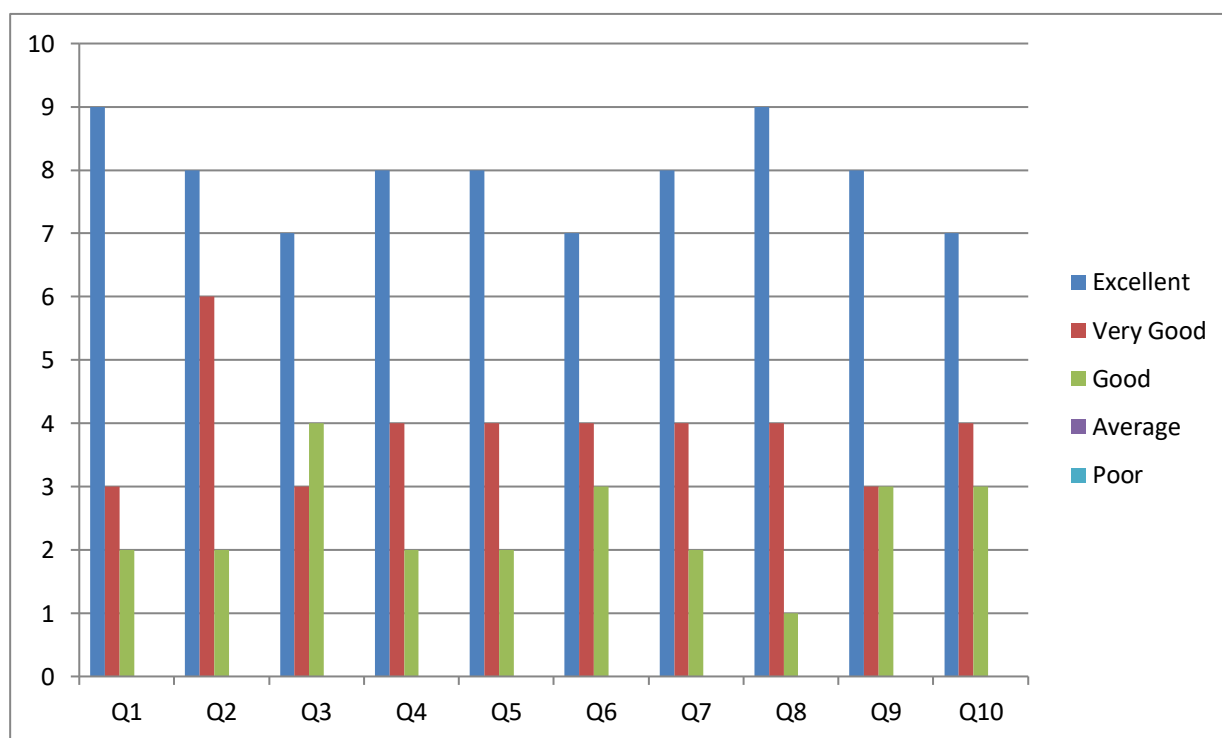




**Department of Electronics and Communication Engineering**

**EMPLOYERS FEEDBACK**

SRL NO	Question	Excellent	Very Good	Good	Average	Poor
1	How do you rate relevance of the courses in relation to the program?	9	3	2	0	0
2	How do you rate the sufficiency of the courses related to industry that are included in the program?	8	6	2	0	0
3	How do you rate the competencies in relation to the course content?	7	3	4	0	0
4	How do you rate the sequence of the units in the syllabus?	8	4	2	0	0
5	How do you rate the relevance of the topics to the Industry?	8	4	2	0	0
6	Rate the offering of the electives in relation to the specialization streams?	7	4	3	0	0
7	How do you rate the offering of the electives in relation to the Technological advancements?	8	4	2	0	0
8	How do you rate the courses which are skills related suiting to the Industry included into the programs?	9	4	1	0	0
9	How do you rate the applicability of the domains and the tools used for designing the experiments in terms of existing practices in the Industry?	8	3	3	0	0
10	How do you rate the experiments in terms of their relevance to the real life application?	7	4	3	0	0



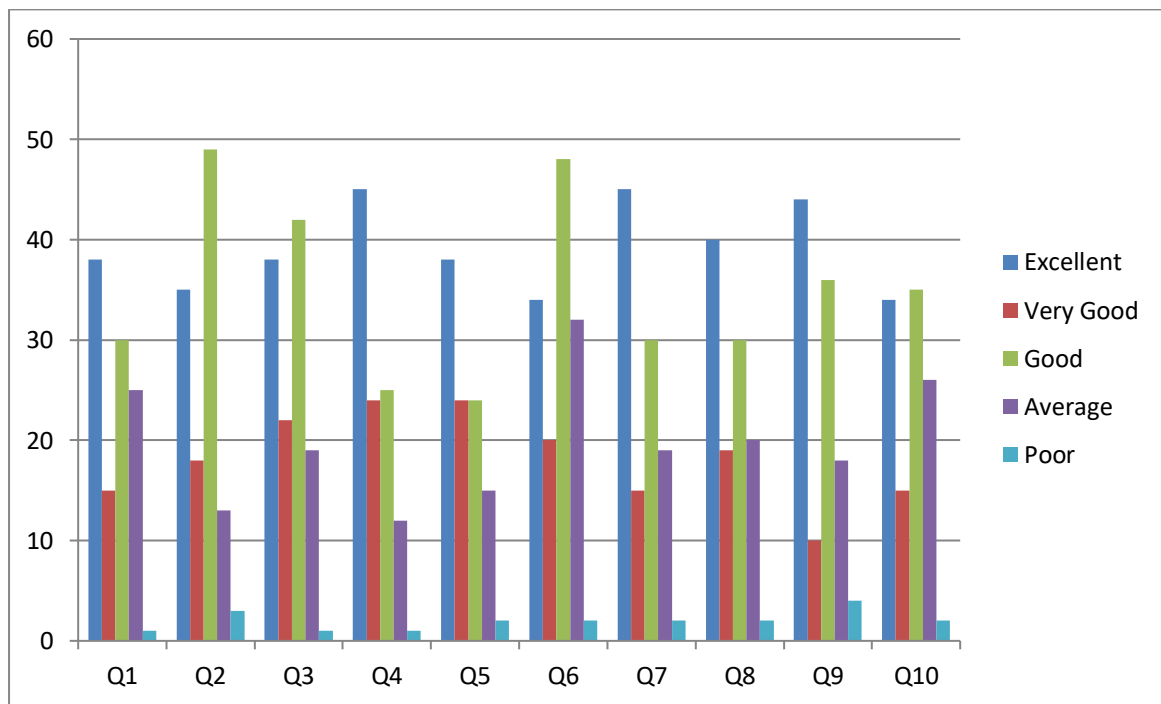


## BABA INSTITUTE OF TECHNOLOGY AND SCIENCES

(Approved by AICTE New Delhi, NAAC Accredited, Affiliated to JNTU Kakinada, ISO 9001-2008 Certified)  
Bakkannapalem Village, Madhurawada Post, Visakhapatnam – 530 048

### PARENTS FEEDBACK

SRL NO	Question	Excellent	Very Good	Good	Average	Poor
1	How do you rate the program that your ward is undergoing in terms of the load of the courses in different semesters?	38	15	30	25	1
2	How do you rate the availability of the Text and reference books in the Market?	35	18	49	13	3
3	How do you rate the quality and relevance of the courses included into the semester?	38	22	42	19	1
4	How do you rate the treatment of the students by the faculty irrespective of the background of the student that includes Gender, cast, community creed etc. in teaching and evaluation?	45	24	25	12	1
5	How do you rate ambience of the university for effective delivery of the academic programs?	38	24	24	15	2
6	How do you rate the courses in terms of their relevance to the latest technologies or future technologies?	34	20	48	32	2
7	How do you rate the programs based on the comfort of your ward in coping with the workload?	45	15	30	19	2
8	How do you rate the quality of teaching in the university?	40	19	30	20	2
9	How do you rate the outcomes that your ward has achieved from the courses	44	10	36	18	4
10	How do you rate the transparency of the evaluation system in the University?	34	15	35	26	2

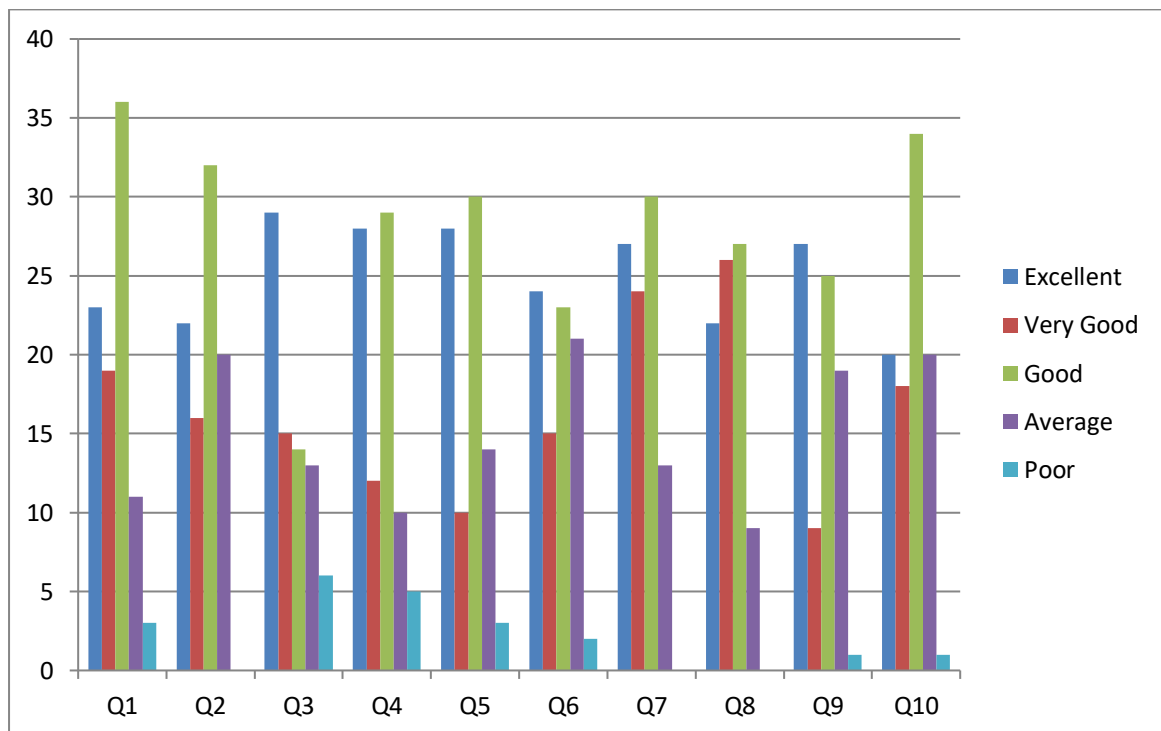




**BABA INSTITUTE OF TECHNOLOGY AND SCIENCES**  
 (Approved by AICTE New Delhi, NAAC Accredited, Affiliated to JNTU Kakinada, ISO 9001-2008 Certified)  
 Bakkannapalem Village, Madhurawada Post, Visakhapatnam - 530 048

ALUMNI FEEDBACK

SRL NO	Question	Excellent	Very Good	Good	Average	Poor
1	How do you rate relevance of the courses in relation to the program?	23	19	36	11	3
2	How do you rate the sequence of the courses included into the programs?	22	16	32	20	0
3	How do you rate the competencies in relation to the course content?	29	15	14	13	6
4	How do rate the sequence of the topics in the units?	28	12	29	10	5
5	Rate the offering of the in relation to the specialization streams?	28	10	30	14	3
6	How do you rate the offering of the electives in relation to the Technological advancements?	24	15	23	21	2
7	How do you rate the courses which are skills related suiting to the Industry included into the programs?	27	24	30	13	0
8	How do you rate the domain used for designing the experiments in terms of the suitability of the Tools to the domain?	22	26	27	9	0
9	How do you rate the experiments in terms of their relevance to the real life application?	27	9	25	19	1
10	How do you rate the courses that you have learnt in relation to your current Job	20	18	34	20	1

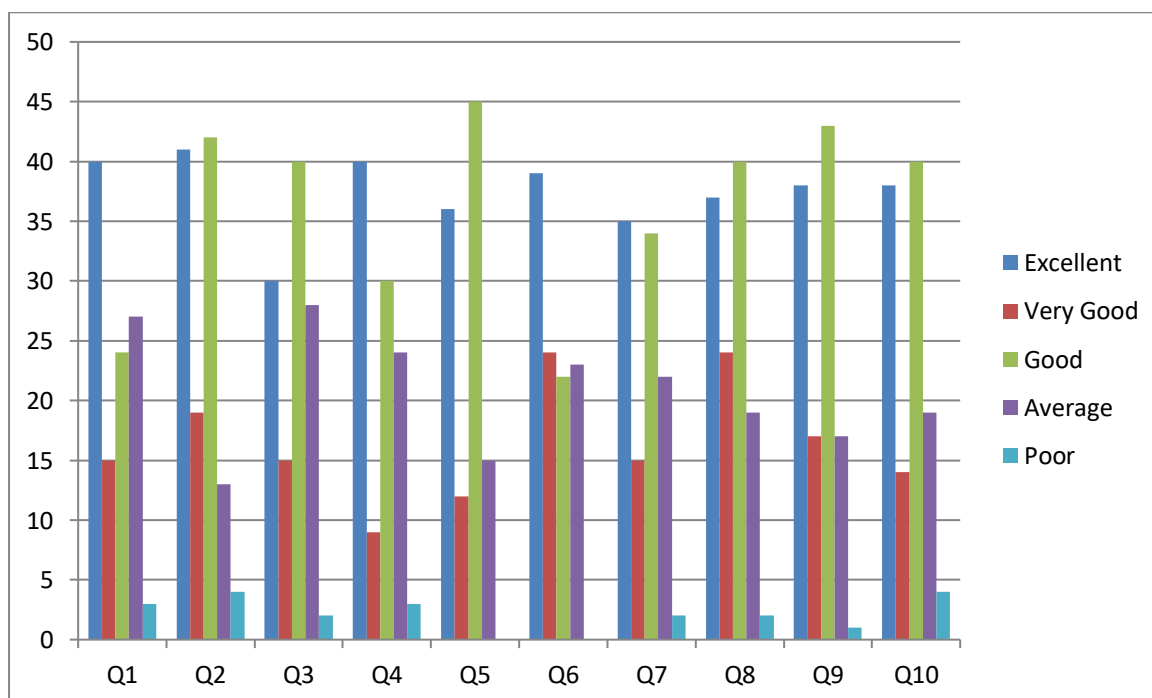




**BABA INSTITUTE OF TECHNOLOGY AND SCIENCES**  
 (Approved by AICTE New Delhi, NAAC Accredited, Affiliated to JNTU Kakinada, ISO 9001-2008 Certified)  
 Bakkannapalem Village, Madhurawada Post, Visakhapatnam – 530 048

STUDENTS FEEDBACK

SRL NO	Question	Excellent	Very Good	Good	Average	Poor
1	How do you rate the sequence of the Courses that you have studied are in sequence to what you have studied in the previous semester?	40	15	24	27	3
2	How do you rate the syllabus of the courses that you have studied in relation to the competencies expected out of the course?	41	19	42	13	4
3	How do you rate the relevance of the units in Syllabus relevant there?	30	15	40	28	2
4	How do you rate the sequence of the units in the course?	40	9	30	24	3
5	How do you rate the allocation of the credits to the courses?	36	12	45	15	0
6	How do you rate the distribution of the contact hours among the course components (E-T-P)?	39	24	22	23	0
7	How do you rate the offering of the electives in terms of their relevance to the specialization streams?	35	15	34	22	2
8	How do you rate the electives offered in relation to the Technological advancements?	37	24	40	19	2
9	How do you rate the relevance of the Text Books and reference books by their international recognition to the Courses.	38	17	43	17	1
10	Rate the size of syllabus in terms of the load on the student	38	14	40	19	4



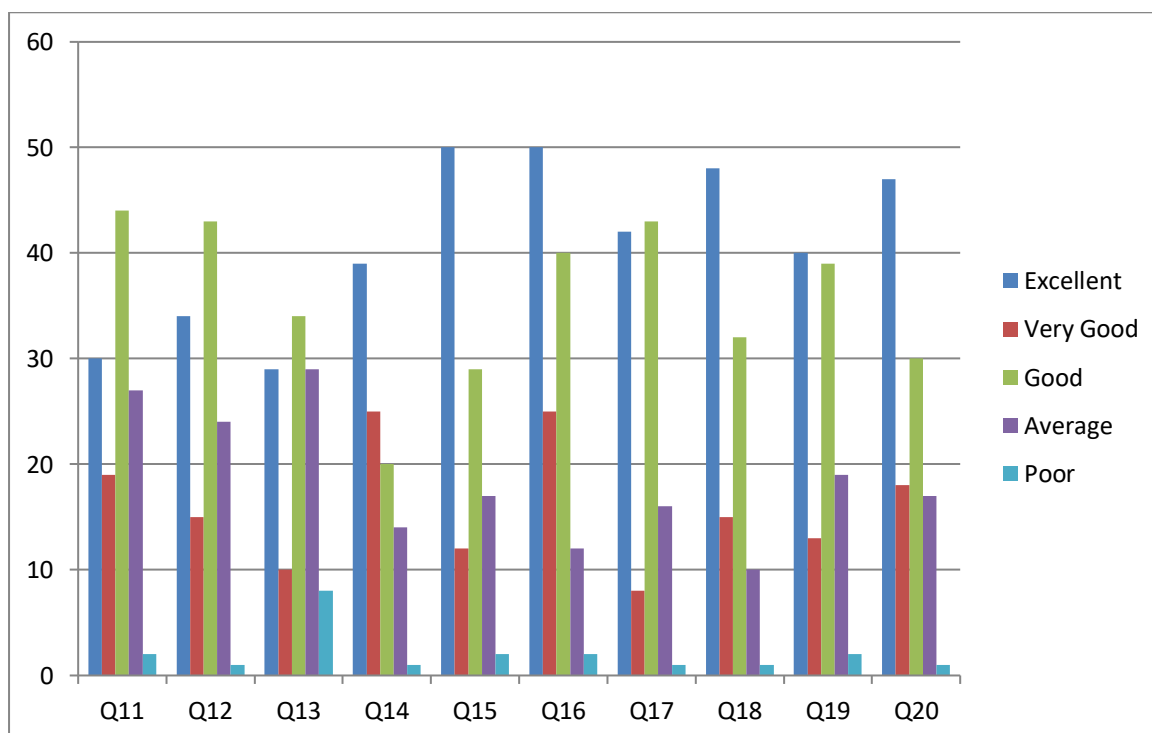




## BABA INSTITUTE OF TECHNOLOGY AND SCIENCES

(Approved by AICTE New Delhi, NAAC Accredited, Affiliated to JNTU Kakinada, ISO 9001-2008 Certified)  
Bakkannapalem Village, Madhurawada Post, Visakhapatnam – 530 048

SRL NO	Question	Excellent	Very Good	Good	Average	Poor
11	Rate the courses in terms of extra learning or self learning considering the design of the courses	30	19	44	27	2
12	Rate the courses sequence of offering considering whether the preceding courses have been covered	34	15	43	24	1
13	How do you rate the loading of the course in a semester?	29	10	34	29	8
14	How do you rate the evaluation scheme designed for each of the course?	39	25	20	14	1
15	How do you rate the objectives stated for each of the course?	50	12	29	17	2
16	How do you rate competencies expected out of the course?	50	25	40	12	2
17	How do you rate the composition of the courses in terms of Basic science, Engineering science, Humanities, Discipline core, discipline elective, open elective project etc.?	42	8	43	16	1
18	How do you rate the percentage of courses having LAB components?	48	15	32	10	1
19	How do you rate the domain used for designing the experiments for the LAB components?	40	13	39	19	2
20	How do you rate the experiments in relation to the real life Applications?	47	18	30	17	1





**BABA INSTITUTE OF TECHNOLOGY AND SCIENCES**  
 (Approved by AICTE New Delhi, NAAC Accredited, Affiliated to JNTU Kakinada, ISO 9001-2008 Certified)  
 Bakkannapalem Village, Madhurawada Post, Visakhapatnam – 530 048

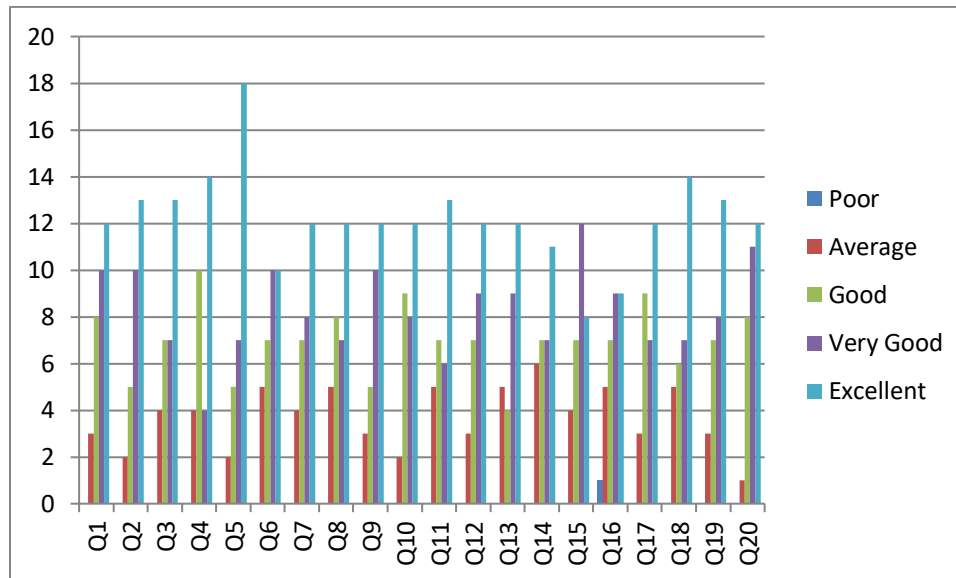
TEACHERS FEEDBACK

SRL NO	Question	Excellent	Very Good	Good	Average	Poor
1	How do you rate the sequence of the Courses that you have studied are in sequence to what you have studied in the previous semester?	12	10	8	3	0
2	How do you rate the syllabus of the courses that you have studied in relation to the competencies expected out of the course?	13	10	5	2	0
3	How do you rate the relevance of the units in Syllabus relevant to the course?	13	7	7	4	0
4	How do you rate the sequence of the units in the course?	14	4	10	4	0
5	How do you rate the allocation of the credits to the courses?	18	7	5	2	0
6	How do you rate the distribution of the contact hours among the course components (L-T-P)?	10	10	7	5	0
7	How do you rate the offering of the electives in terms of their relevance to the specialization streams?	12	8	7	4	0
8	How do you rate the electives offered in relation to the Technological advancements?	12	7	8	5	0
9	How do you rate the relevance of the Text Books and reference books by their International recognition to the Courses?	12	10	5	3	0
10	Rate the Size of syllabus in terms of the load on the student	12	8	9	2	0
11	Rate the courses in terms of extra learning or self learning considering the design of the courses	13	6	7	5	0
12	Rate the courses in terms of sequence of offering considering whether the preceding courses have been covered.	12	9	7	3	0
13	How do you Rate the loading of the courses in a semester?	12	9	4	5	0
14	How do you rate the evaluation scheme designed for each of the course?	11	7	7	6	0
15	How do you rate the objectives stated for each of the course?	8	12	7	4	0
16	How do you rate competencies expected out of the course?	9	9	7	5	1
17	How do you rate the composition of the courses in terms of Basic science, Engineering science, Humanities, Discipline core, discipline elective, open elective, project etc.?	12	7	9	3	0
18	How do you rate the percentage of courses having LAB components?	14	7	6	5	0
19	How do you rate the domain used for designing the experiments for the LAB components?	13	8	7	3	0



**BABA INSTITUTE OF TECHNOLOGY AND SCIENCES**  
 (Approved by AICTE New Delhi, NAAC Accredited, Affiliated to JNTU Kakinada, ISO 9001-2008 Certified)  
 Bakkannapalem Village, Madhurawada Post, Visakhapatnam – 530 048

20	How do you rate the experiments in relation to the real life Applications?	12	11	8	1	0
----	--	----	----	---	---	---

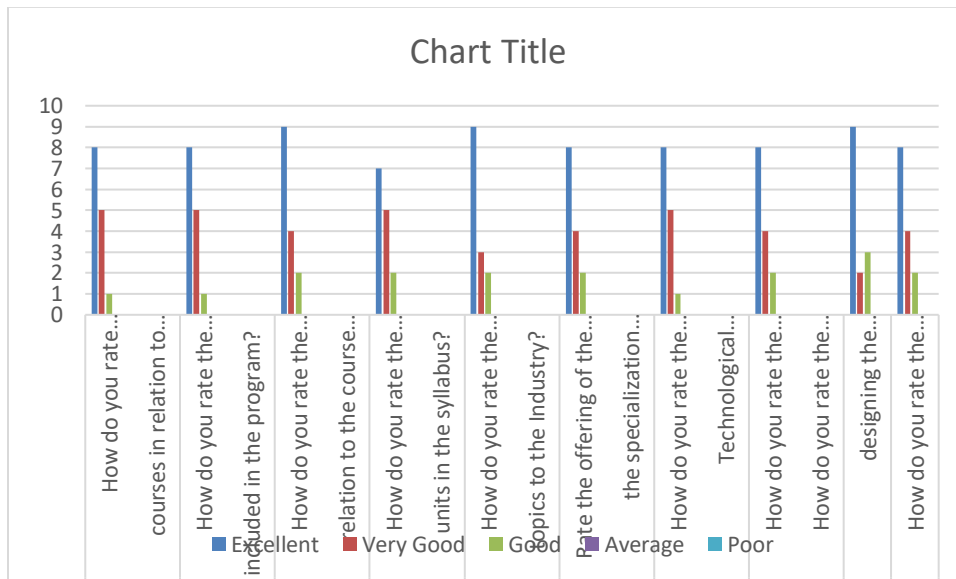




**Department of CSE**

**EMPLOYERS FEEDBACK**

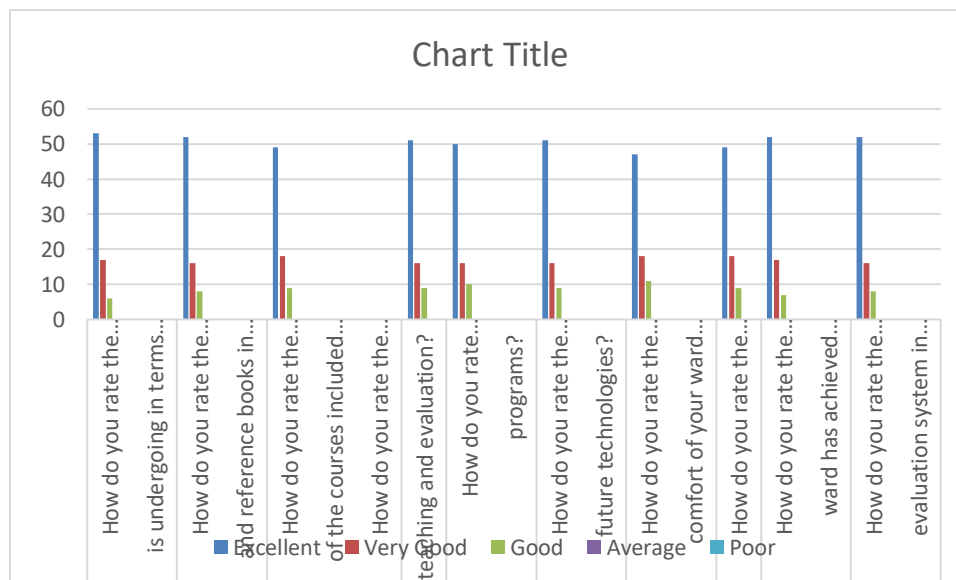
SRL NO	Question	Excellent	Very Good	Good	Average	Poor
1	How do you rate relevance of the courses in relation to the program?	8	5	1	0	0
2	How do you rate the sufficiency of the courses related to industry that are included in the program?	8	5	1	0	0
3	How do you rate the competencies in relation to the course content?	9	4	2	0	0
4	How do you rate the sequence of the units in the syllabus?	7	5	2	0	0
5	How do you rate the relevance of the topics to the Industry?	9	3	2	0	0
6	Rate the offering of the in relation to the specialization streams?	8	4	2	0	0
7	How do you rate the offering of the electives in relation to the Technological advancements?	8	5	1	0	0
8	How do you rate the courses which are skills related suiting to the Industry included into the programs?	8	4	2	0	0
9	How do you rate the applicability of the domains and the tools used for designing the experiments in terms of existing practices in the Industry?	9	2	3	0	0
10	How do you rate the experiments in terms of their relevance to the real life application?	8	4	2	0	0





PARENTS FEEDBACK

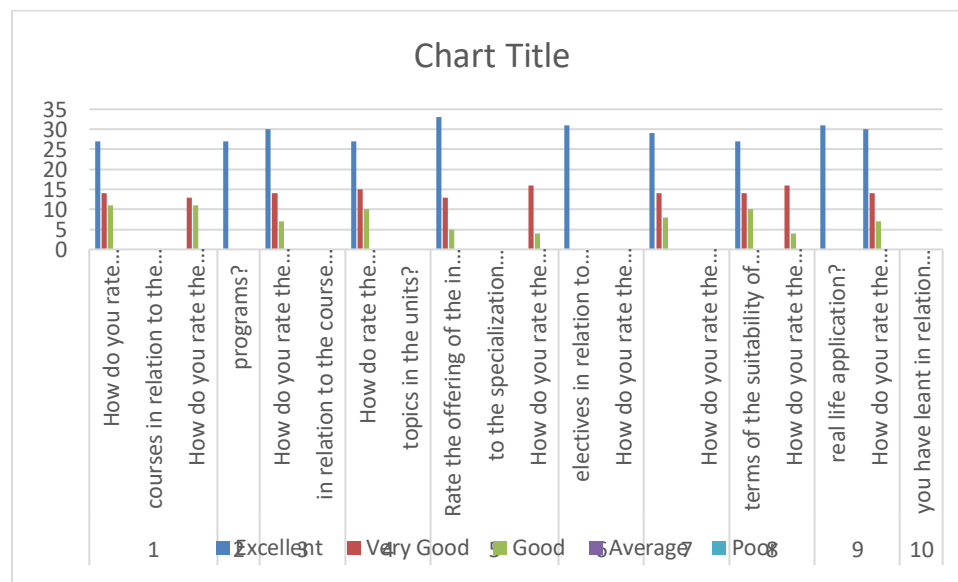
SRL NO	Question	Excellent	Very Good	Good	Average	Poor
1	How do you rate the program that your ward is undergoing in terms of the load of the courses in different semesters?	53	17	6	0	0
2	How do you rate the availability of the Text and reference books in the Market?	52	16	8	0	0
3	How do you rate the quality and relevance of the courses included into the semester?	49	18	9	0	0
4	How do you rate the treatment of the students by the faculty irrespective of the background of the student that includes Gender, cast, community creed etc. in teaching and evaluation?	51	16	9	0	0
5	How do you rate ambience of the university for effective delivery of the academic programs?	50	16	10	0	0
6	How do you rate the courses in terms of their relevance to the latest technologies or future technologies?	51	16	9	0	0
7	How do you rate the programs based on the comfort of your ward in coping with the workload?	47	18	11	0	0
8	How do you rate the quality of teaching in the university?	49	18	9	0	0
9	How do you rate the outcomes that your ward has achieved from the courses	52	17	7	0	0
10	How do you rate the transparency of the evaluation system in the University?	52	16	8	0	0





ALUMNI FEEDBACK

SRL NO	Question	Excellent	Very Good	Good	Average	Poor
1	How do you rate relevance of the courses in relation to the program?	27	14	11	0	0
2	How do you rate the sequence of the courses included into the programs?	27	13	11	0	0
3	How do you rate the competencies in relation to the course content?	30	14	7	0	0
4	How do rate the sequence of the topics in the units?	27	15	10	0	0
5	Rate the offering of the in relation to the specialization streams?	33	13	5	0	0
6	How do you rate the offering of the electives in relation to the Technological advancements?	31	16	4	0	0
7	How do you rate the courses which are skills related suiting to the Industry included into the programs?	29	14	8	0	0
8	How do you rate the domain used for designing the experiments in terms of the suitability of the Tools to the domain?	27	14	10	0	0
9	How do you rate the experiments in terms of their relevance to the real life application?	31	16	4	0	0
10	How do you rate the courses that you have learnt in relation to your current Job	30	14	7	0	0

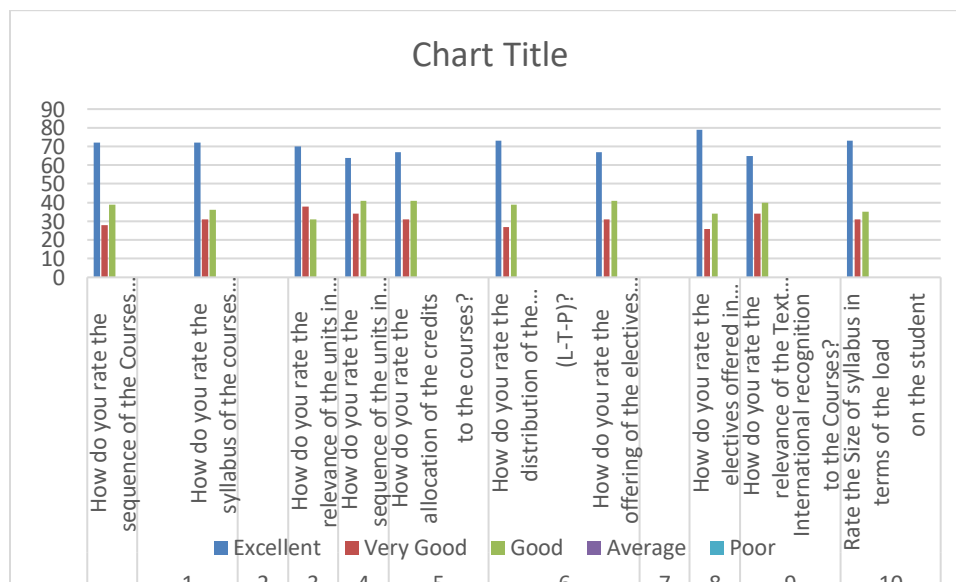




**BABA INSTITUTE OF TECHNOLOGY AND SCIENCES**  
 (Approved by AICTE New Delhi, NAAC Accredited, Affiliated to JNTU Kakinada, ISO 9001-2008 Certified)  
 Bakkannapalem Village, Madhurawada Post, Visakhapatnam – 530 048

STUDENTS FEEDBACK

SRL NO	Question	Excellent	Very Good	Good	Average	Poor
1	How do you rate the sequence of the Courses that you have studied are in sequence to what you have studied in the previous semester?	72	28	39	0	0
2	How do you rate the syllabus of the courses that you have studied in relation to the competencies expected out of the course?	72	31	36	0	0
3	How do you rate the relevance of the units in Syllabus relevant to the course?	70	38	31	0	0
4	How do you rate the sequence of the units in the course?	64	34	41	0	0
5	How do you rate the allocation of the credits to the courses?	67	31	41	0	0
6	How do you rate the distribution of the contact hours among the course components (L-T-P)?	73	27	39	0	0
7	How do you rate the offering of the electives in terms of their relevance to the specialization streams?	67	31	41	0	0
8	How do you rate the electives offered in relation to the Technological advancements?	79	26	34	0	0
9	How do you rate the relevance of the Text Books and reference books by their International recognition to the Courses?	65	34	40	0	0
10	Rate the Size of syllabus in terms of the load on the student	73	31	35	0	0

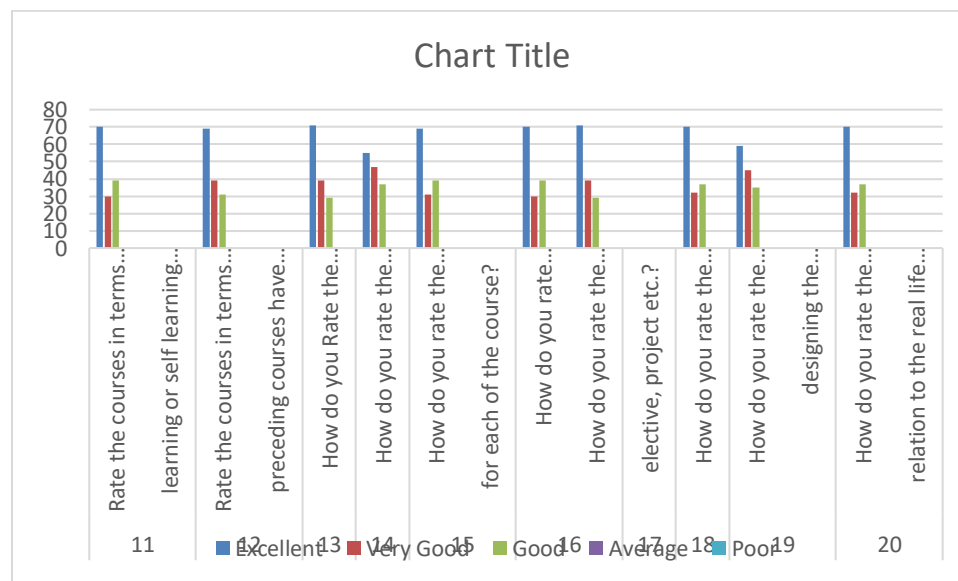




**BABA INSTITUTE OF TECHNOLOGY AND SCIENCES**  
 (Approved by AICTE New Delhi, NAAC Accredited, Affiliated to JNTU Kakinada, ISO 9001-2008 Certified)  
 Bakkannapalem Village, Madhurawada Post, Visakhapatnam – 530 048

STUDENTS FEEDBACK

SRL NO	Question	Excellent	Very Good	Good	Average	Poor
11	Rate the courses in terms of extra learning or self learning considering the design of the courses	70	30	39	0	0
12	Rate the courses in terms of sequence of offering considering whether the preceding courses have been covered.	69	39	31	0	0
13	How do you Rate the loading of the courses in a semester?	71	39	29	0	0
14	How do you rate the evaluation scheme designed for each of the course?	55	47	37	0	0
15	How do you rate the objectives stated for each of the course?	69	31	39	0	0
16	How do you rate competencies expected out of the course?	70	30	39	0	0
17	How do you rate the composition of the courses in terms of Basic science, Engineering science, Humanities, Discipline core, discipline elective, open elective, project etc.?	71	39	29	0	0
18	How do you rate the percentage of courses having LAB components?	70	32	37	0	0
19	How do you rate the domain used for designing the experiments for the LAB components?	59	45	35	0	0
20	How do you rate the experiments in relation to the real life Applications?	70	32	37	0	0



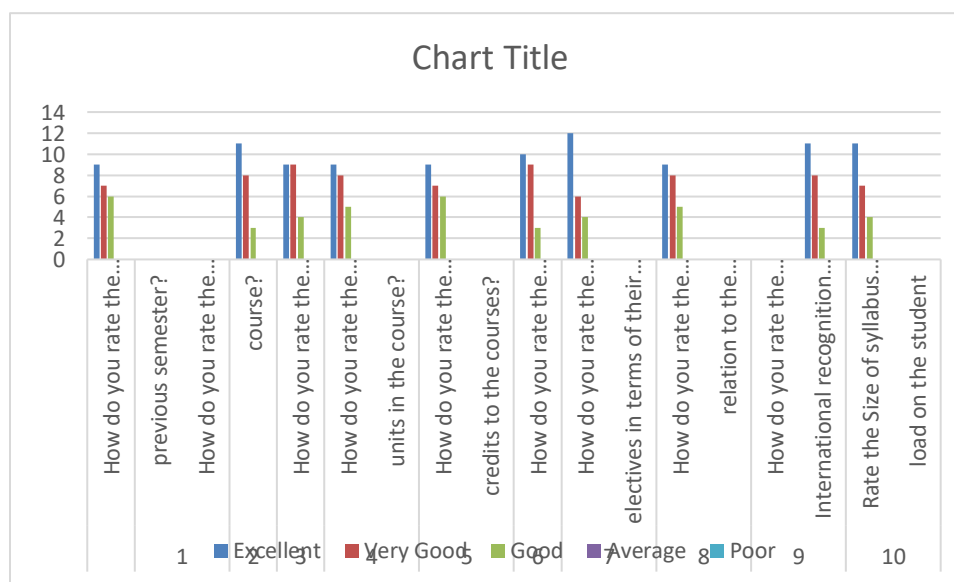




**BABA INSTITUTE OF TECHNOLOGY AND SCIENCES**  
 (Approved by AICTE New Delhi, NAAC Accredited, Affiliated to JNTU Kakinada, ISO 9001-2008 Certified)  
 Bakkannapalem Village, Madhurawada Post, Visakhapatnam – 530 048

TEACHERS FEEDBACK

SRL NO	Question	Excellent	Very Good	Good	Average	Poor
1	How do you rate the sequence of the Courses that you have studied are in sequence to what you have studied in the previous semester?	9	7	6	0	0
2	How do you rate the syllabus of the courses that you have studied in relation to the competencies expected out of the course?	11	8	3	0	0
3	How do you rate the relevance of the units in Syllabus relevant to the course?	9	9	4	0	0
4	How do you rate the sequence of the units in the course?	9	8	5	0	0
5	How do you rate the allocation of the credits to the courses?	9	7	6	0	0
6	How do you rate the distribution of the contact hours among the course components (L-T-P)?	10	9	3	0	0
7	How do you rate the offering of the electives in terms of their relevance to the specialization streams?	12	6	4	0	0
8	How do you rate the electives offered in relation to the Technological advancements?	9	8	5	0	0
9	How do you rate the relevance of the Text Books and reference books by their International recognition to the Courses?	11	8	3	0	0
10	Rate the Size of syllabus in terms of the load on the student	11	7	4	0	0

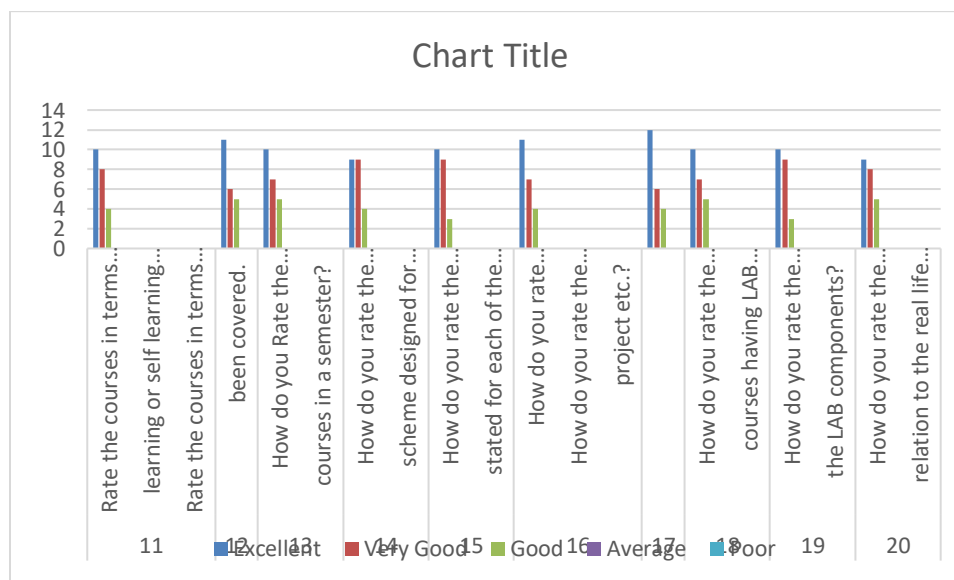




**BABA INSTITUTE OF TECHNOLOGY AND SCIENCES**  
 (Approved by AICTE New Delhi, NAAC Accredited, Affiliated to JNTU Kakinada, ISO 9001-2008 Certified)  
 Bakkannapalem Village, Madhurawada Post, Visakhapatnam – 530 048

TEACHERS FEEDBACK

SRL NO	Question	Excellent	Very Good	Good	Average	Poor
11	Rate the courses in terms of extra learning or self learning considering the design of the courses	10	8	4	0	0
12	Rate the courses in terms of sequence of offering considering whether the preceding courses have been covered.	11	6	5	0	0
13	How do you Rate the loading of the courses in a semester?	10	7	5	0	0
14	How do you rate the evaluation scheme designed for each of the course?	9	9	4	0	0
15	How do you rate the objectives stated for each of the course?	10	9	3	0	0
16	How do you rate competencies expected out of the course?	11	7	4	0	0
17	How do you rate the composition of the courses in terms of Basic science, Engineering science, Humanities, Discipline core, discipline elective, open elective, project etc.?	12	6	4	0	0
18	How do you rate the percentage of courses having LAB components?	10	7	5	0	0
19	How do you rate the domain used for designing the experiments for the LAB components?	10	9	3	0	0
20	How do you rate the experiments in relation to the real life Applications?	9	8	5	0	0

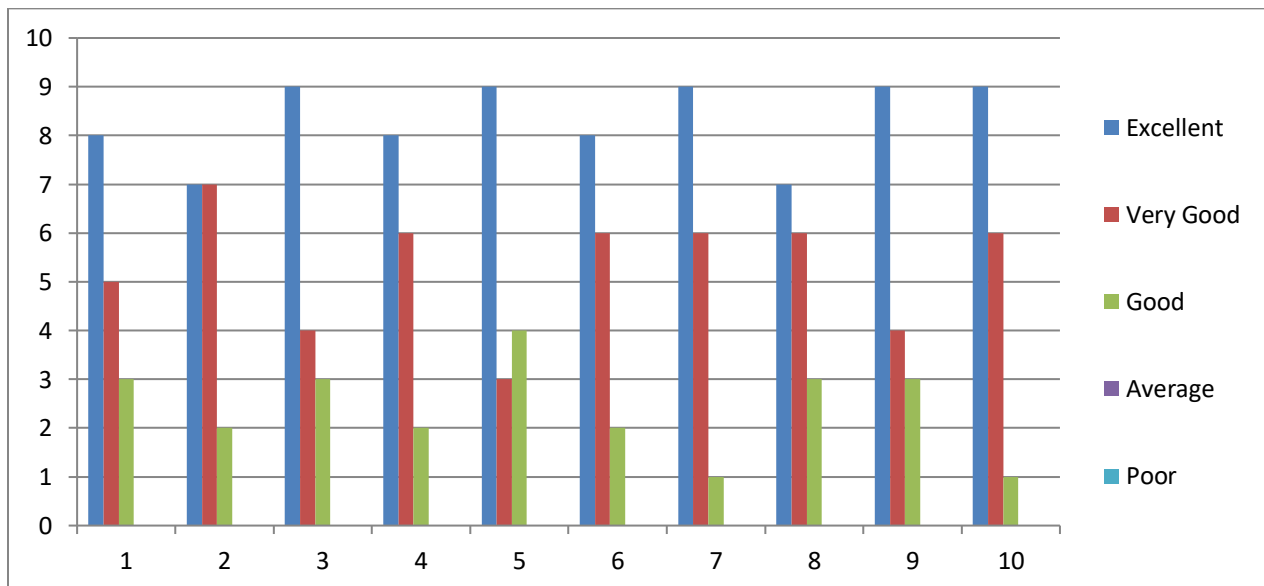




**Basic Sciences & Humanities Department**

**EMPLOYERS FEEDBACK**

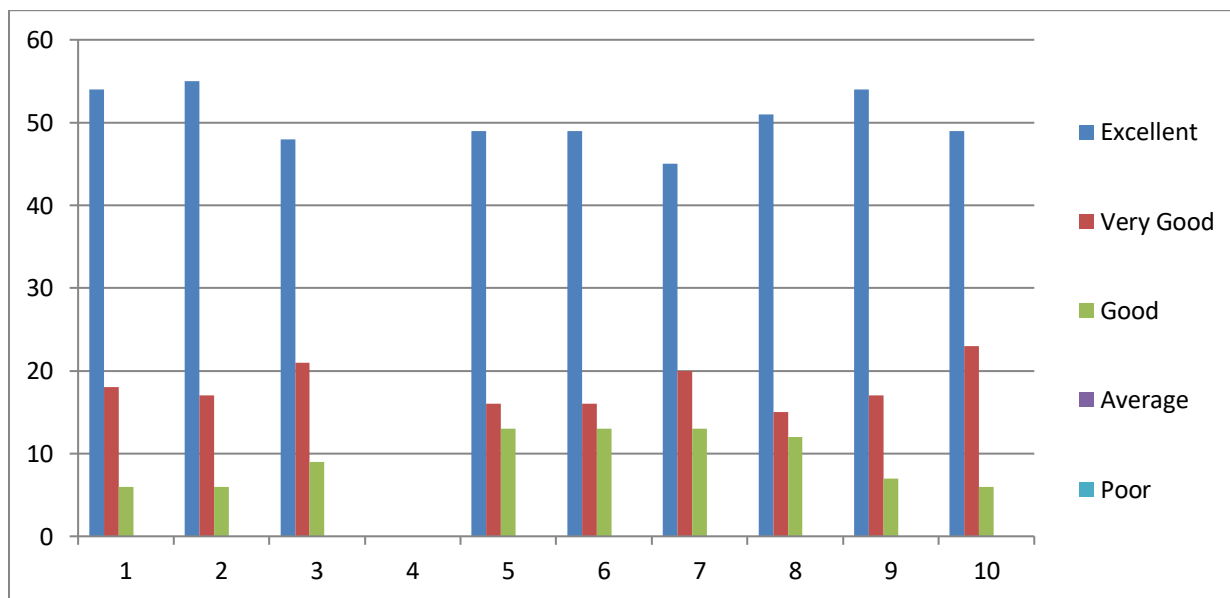
SRL NO	Question	Excellent	Very Good	Good	Average	Poor
1	How do you rate relevance of the courses in relation to the program?	8	5	3	0	0
2	How do you rate the sufficiency of the courses related to industry that are included in the program?	7	7	2	0	0
3	How do you rate the competencies in relation to the course content?	9	4	3	0	0
4	How do you rate the sequence of the units in the syllabus?	8	6	2	0	0
5	How do you rate the relevance of the topics to the Industry?	9	3	4	0	0
6	Rate the offering of the in relation to the specialization streams?	8	6	2	0	0
7	How do you rate the offering of the electives in relation to the Technological advancements?	9	6	1	0	0
8	How do you rate the courses which are skills related suiting to the Industry included into the programs?	7	6	3	0	0
9	How do you rate the applicability of the domains and the tools used for designing the experiments in terms of existing practices in the Industry?	9	4	3	0	0
10	How do you rate the experiments in terms of their relevance to the real life application?	9	6	1	0	0





PARENTS FEEDBACK

SRL NO	Question	Excellent	Very Good	Good	Average	Poor
1	How do you rate the program that your ward is undergoing in terms of the load of the courses in different semesters?	54	18	6	0	0
2	How do you rate the availability of the Text and reference books in the Market?	55	17	6	0	0
3	How do you rate the quality and relevance of the courses included into the semester?	48	21	9	0	0
4	How do you rate the treatment of the students by the faculty irrespective of the background of the student that includes Gender, cast, community creed etc. in teaching and evaluation?	49	16	13	0	0
5	How do you rate ambience of the university for effective delivery of the academic programs?	48	19	11	0	0
6	How do you rate the courses in terms of their relevance to the latest technologies or future technologies?	49	16	13	0	0
7	How do you rate the programs based on the comfort of your ward in coping with the workload?	45	20	13	0	0
8	How do you rate the quality of teaching in the university?	51	15	12	0	0
9	How do you rate the outcomes that your ward has achieved from the courses	54	17	7	0	0
10	How do you rate the transparency of the evaluation system in the University?	49	23	6	0	0

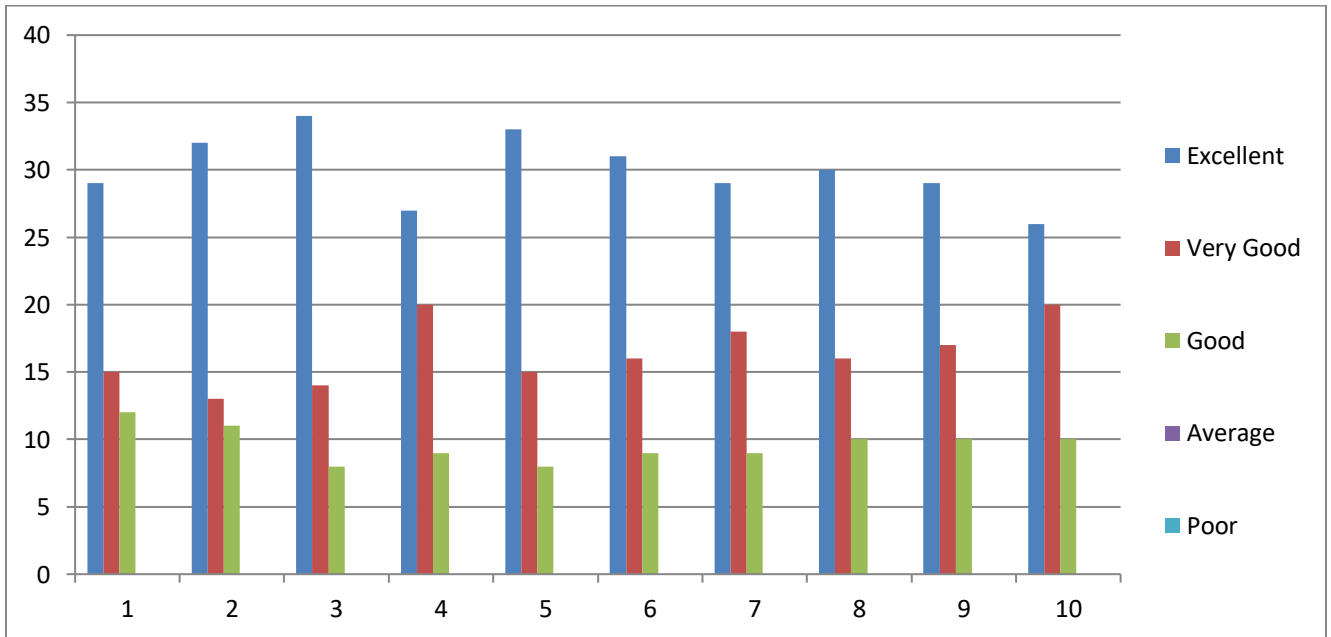




**BABA INSTITUTE OF TECHNOLOGY AND SCIENCES**  
 (Approved by AICTE New Delhi, NAAC Accredited, Affiliated to JNTU Kakinada, ISO 9001-2008 Certified)  
 Bakkannapalem Village, Madhurawada Post, Visakhapatnam – 530 048

ALUMNI FEEDBACK

SRL NO	Question	Excellent	Very Good	Good	Average	Poor
1	How do you rate relevance of the courses in relation to the program?	29	15	12	0	0
2	How do you rate the sequence of the courses included into the programs?	32	13	11	0	0
3	How do you rate the competencies in relation to the course content?	34	14	8	0	0
4	How do rate the sequence of the topics in the units?	27	20	9	0	0
5	Rate the offering of the in relation to the specialization streams?	33	15	8	0	0
6	How do you rate the offering of the electives in relation to the Technological advancements?	31	16	9	0	0
7	How do you rate the courses which are skills related suiting to the Industry included into the programs?	29	18	9	0	0
8	How do you rate the domain used for designing the experiments in terms of the suitability of the Tools to the domain?	30	16	10	0	0
9	How do you rate the experiments in terms of their relevance to the real life application?	29	17	10	0	0
10	How do you rate the courses that you have leant in relation to your current Job	26	20	10	0	0

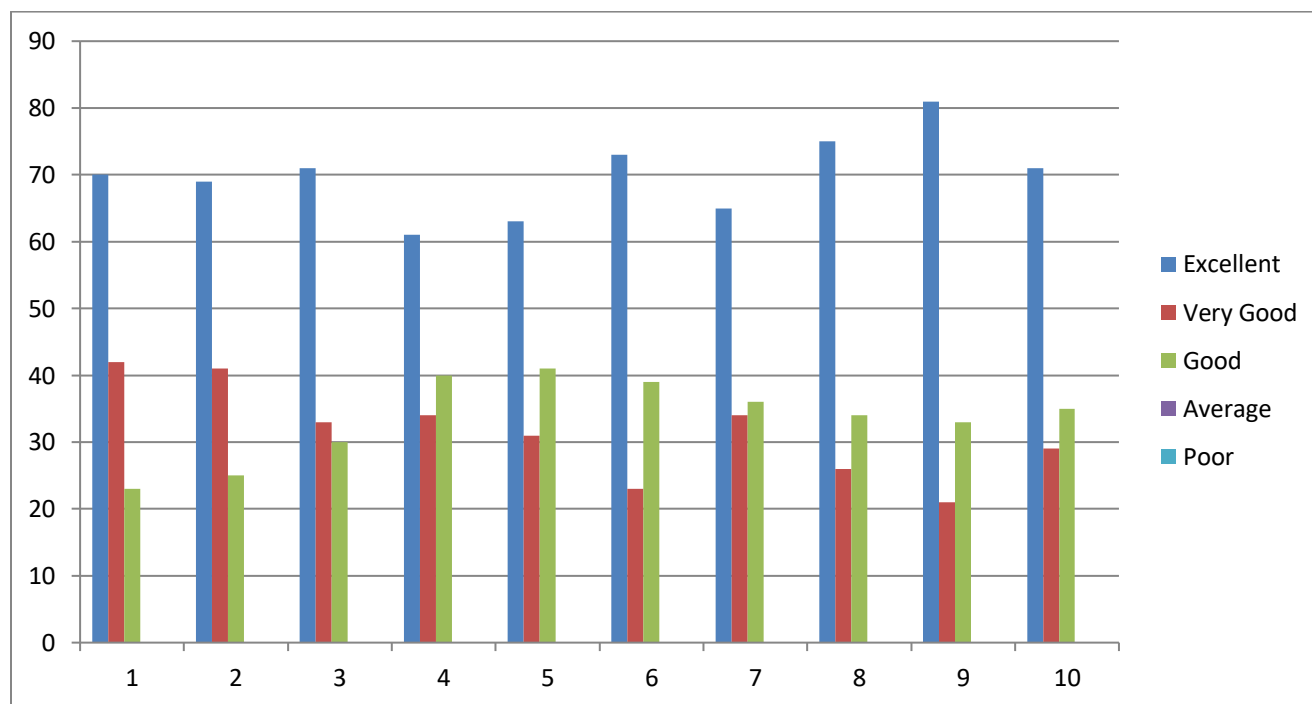




**BABA INSTITUTE OF TECHNOLOGY AND SCIENCES**  
 (Approved by AICTE New Delhi, NAAC Accredited, Affiliated to JNTU Kakinada, ISO 9001-2008 Certified)  
 Bakkannapalem Village, Madhurawada Post, Visakhapatnam – 530 048

STUDENTS FEEDBACK

SRL NO	Question	Excellent	Very Good	Good	Average	Poor
1	How do you rate the sequence of the Courses that you have studied are in sequence to what you have studied in the previous semester?	70	42	23	0	0
2	How do you rate the syllabus of the courses that you have studied in relation to the competencies expected out of the course?	69	41	25	0	0
3	How do you rate the relevance of the units in Syllabus relevant to the course?	71	33	30	0	0
4	How do you rate the sequence of the units in the course?	61	34	40	0	0
5	How do you rate the allocation of the credits to the courses?	63	31	41	0	0
6	How do you rate the distribution of the contact hours among the course components (L-T-P)?	73	23	39	0	0
7	How do you rate the offering of the electives in terms of their relevance to the specialization streams?	65	34	36	0	0
8	How do you rate the electives offered in relation to the Technological advancements?	75	26	34	0	0
9	How do you rate the relevance of the Text Books and reference books by their International recognition to the Courses?	81	21	33	0	0
10	Rate the Size of syllabus in terms of the load on the student	71	29	35	0	0

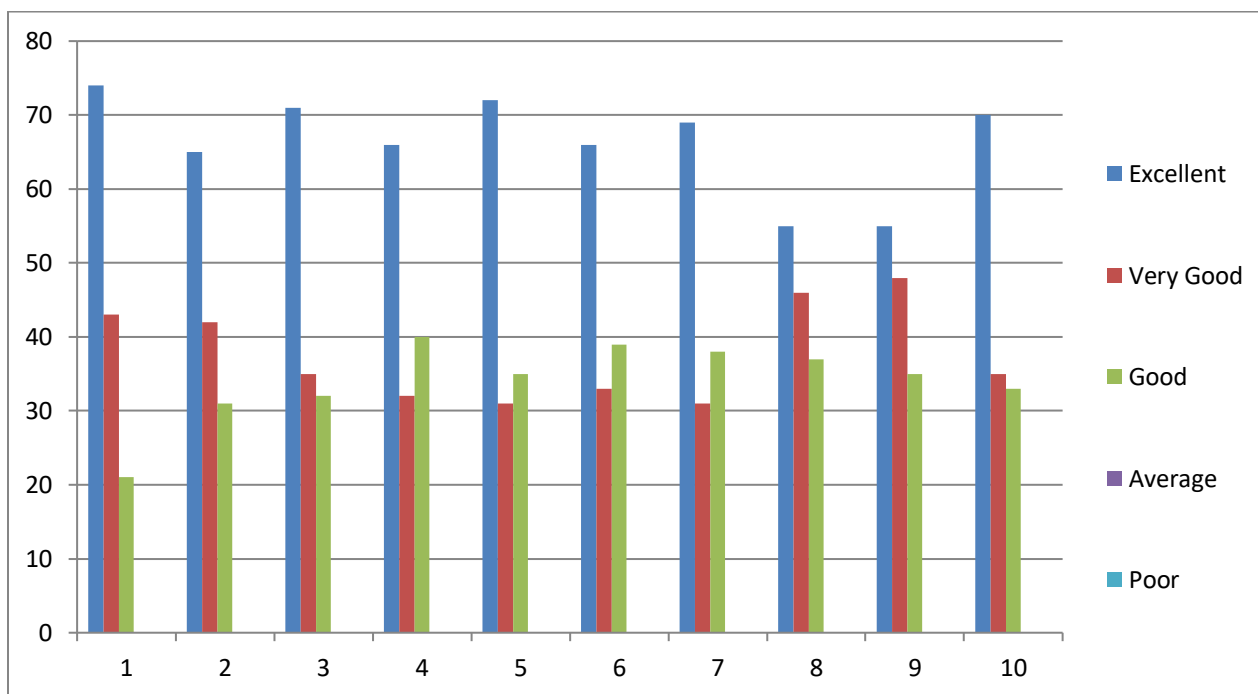




**BABA INSTITUTE OF TECHNOLOGY AND SCIENCES**  
 (Approved by AICTE New Delhi, NAAC Accredited, Affiliated to JNTU Kakinada, ISO 9001-2008 Certified)  
 Bakkannapalem Village, Madhurawada Post, Visakhapatnam – 530 048

STUDENTS FEEDBACK

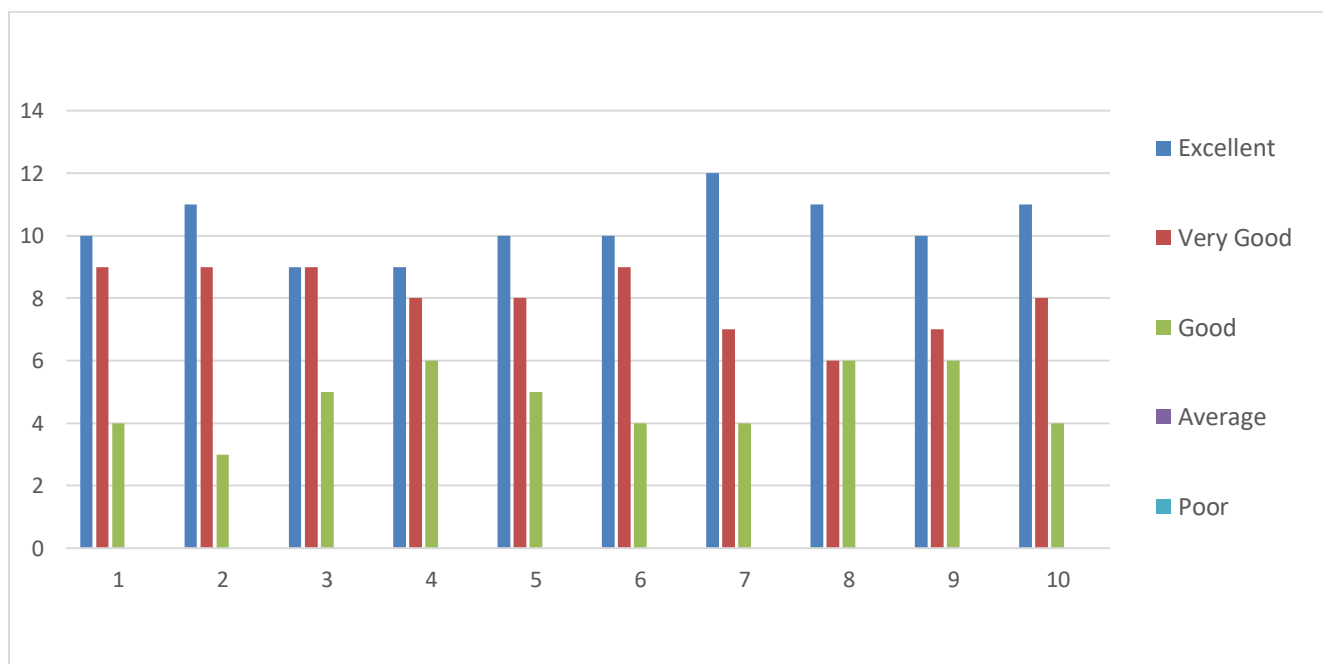
SRL NO	Question	Excellent	Very Good	Good	Average	Poor
11	Rate the courses in terms of extra learning or self learning considering the design of the courses	74	43	21	0	0
12	Rate the courses in terms of sequence of offering considering whether the preceding courses have been covered.	65	42	31	0	0
13	How do you Rate the loading of the courses in a semester?	71	35	32	0	0
14	How do you rate the evaluation scheme designed for each of the course?	66	32	40	0	0
15	How do you rate the objectives stated for each of the course?	72	31	35	0	0
16	How do you rate competencies expected out of the course?	66	33	39	0	0
17	How do you rate the composition of the courses in terms of Basic science, Engineering science, Humanities, Discipline core, discipline elective, open elective, project etc.?	69	31	38	0	0
18	How do you rate the percentage of courses having LAB components?	55	46	37	0	0
19	How do you rate the domain used for designing the experiments for the LAB components?	55	48	35	0	0
20	How do you rate the experiments in relation to the real life Applications?	70	35	33	0	0





TEACHERS FEEDBACK

SRL NO	Question	Excellent	Very Good	Good	Average	Poor
1	How do you rate the sequence of the Courses that you have studied are in sequence to what you have studied in the previous semester?	10	9	4	0	0
2	How do you rate the syllabus of the courses that you have studied in relation to the competencies expected out of the course?	11	9	3	0	0
3	How do you rate the relevance of the units in Syllabus relevant to the course?	9	9	5	0	0
4	How do you rate the sequence of the units in the course?	9	8	6	0	0
5	How do you rate the allocation of the credits to the courses?	10	8	5	0	0
6	How do you rate the distribution of the contact hours among the course components (L-T-P)?	10	9	4	0	0
7	How do you rate the offering of the electives in terms of their relevance to the specialization streams?	12	7	4	0	0
8	How do you rate the electives offered in relation to the Technological advancements?	11	6	6	0	0
9	How do you rate the relevance of the Text Books and reference books by their International recognition to the Courses?	10	7	6	0	0
10	Rate the Size of syllabus in terms of the load on the student	11	8	4	0	0



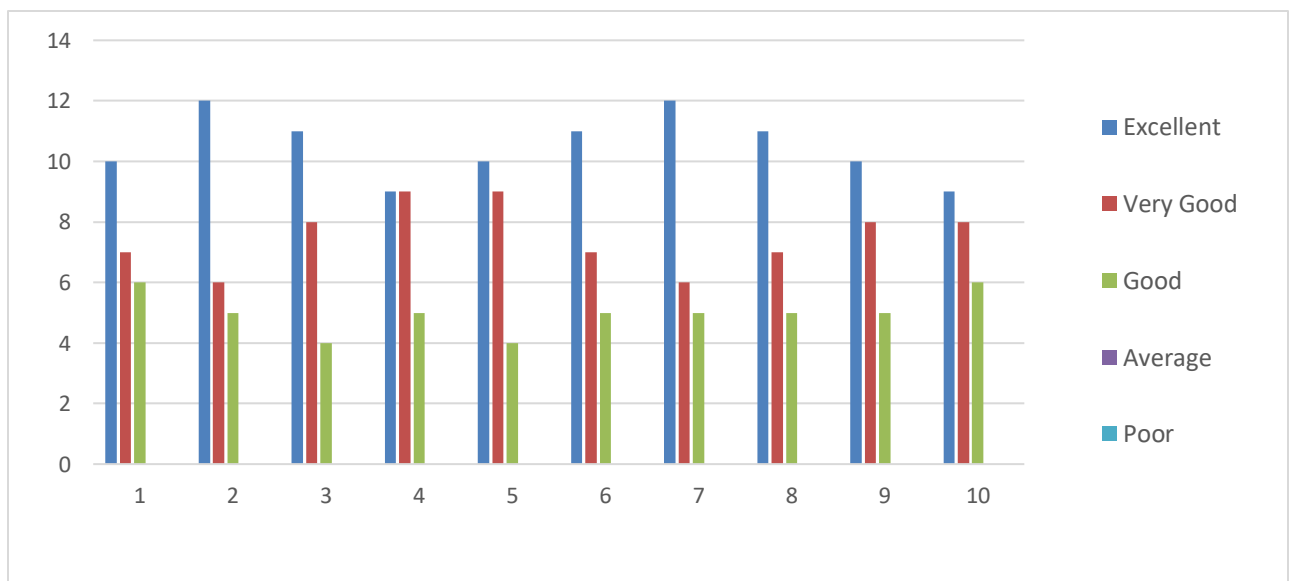




**BABA INSTITUTE OF TECHNOLOGY AND SCIENCES**  
 (Approved by AICTE New Delhi, NAAC Accredited, Affiliated to JNTU Kakinada, ISO 9001-2008 Certified)  
 Bakkannapalem Village, Madhurawada Post, Visakhapatnam – 530 048

TEACHERS FEEDBACK

SRL NO	Question	Excellent	Very Good	Good	Average	Poor
11	Rate the courses in terms of extra learning or self learning considering the design of the courses	10	7	6	0	0
12	Rate the courses in terms of sequence of offering considering whether the preceding courses have been covered.	12	6	5	0	0
13	How do you Rate the loading of the courses in a semester?	11	8	4	0	0
14	How do you rate the evaluation scheme designed for each of the course?	9	9	5	0	0
15	How do you rate the objectives stated for each of the course?	10	9	4	0	0
16	How do you rate competencies expected out of the course?	11	7	5	0	0
17	How do you rate the composition of the courses in terms of Basic science, Engineering science, Humanities, Discipline core, discipline elective, open elective, project etc.?	12	6	5	0	0
18	How do you rate the percentage of courses having LAB components?	11	7	5	0	0
19	How do you rate the domain used for designing the experiments for the LAB components?	10	8	5	0	0
20	How do you rate the experiments in relation to the real life Applications?	9	8	6	0	0





**Department of MBA**

**EMPLOYERS FEEDBACK**

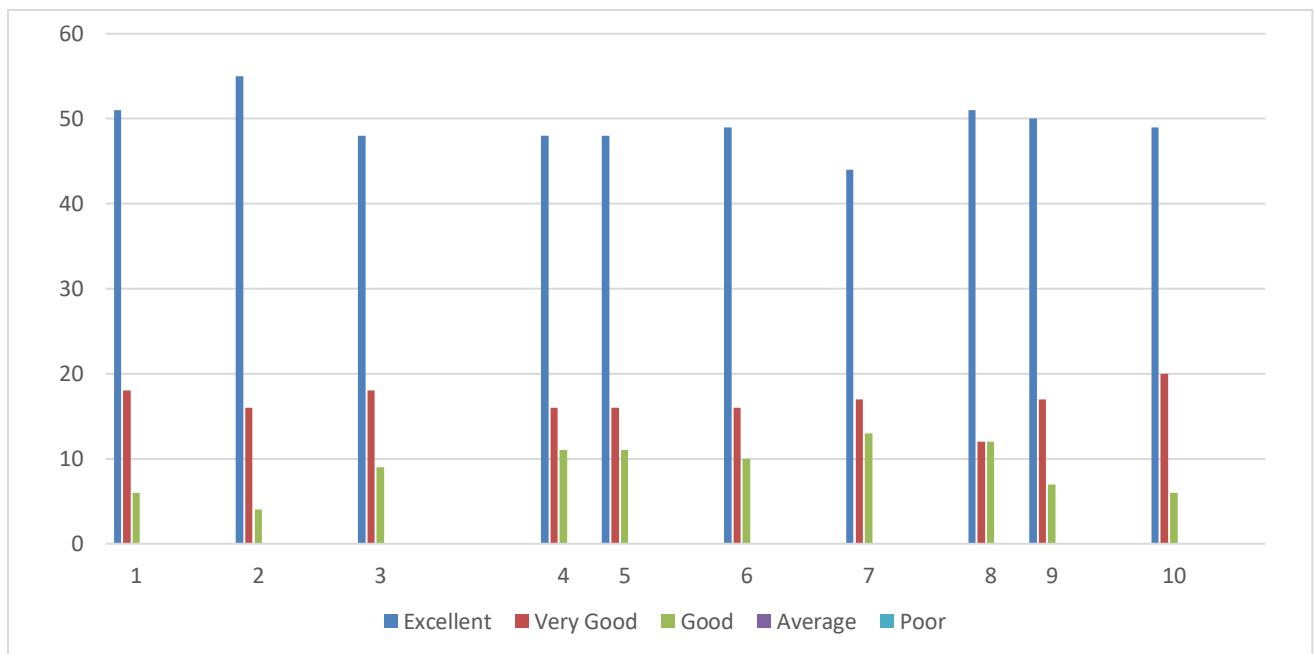
SRL NO	Question	Excellent	Very Good	Good	Average	Poor
1	How do you rate relevance of the courses in relation to the program?	7	4	2	0	0
2	How do you rate the sufficiency of the courses related to industry that are included in the program?	7	4	2	0	0
3	How do you rate the competencies in relation to the course content?	7	4	2	0	0
4	How do you rate the sequence of the units in the syllabus?	7	5	1	0	0
5	How do you rate the relevance of the topics to the Industry?	9	2	2	0	0
6	Rate the offering of the in relation to the specialization streams?	8	2	3	0	0
7	How do you rate the offering of the electives in relation to the Technological advancements?	7	5	1	0	0
8	How do you rate the courses which are skills related suiting to the Industry included into the programs?	8	3	2	0	0
9	How do you rate the applicability of the domains and the tools used for designing the experiments in terms of existing practices in the Industry?	8	2	3	0	0
10	How do you rate the experiments in terms of their relevance to the real life application?	8	2	3	0	0





PARENTS FEEDBACK

SRL NO	Question	Excellent	Very Good	Good	Average	Poor
1	How do you rate the program that your ward is undergoing in terms of the load of the courses in different semesters?	51	18	6	0	0
2	How do you rate the availability of the Text and reference books in the Market?	55	16	4	0	0
3	How do you rate the quality and relevance of the courses included into the semester?	48	18	9	0	0
4	How do you rate the treatment of the students by the faculty irrespective of the background of the student that includes Gender, cast, community creed etc. in teaching and evaluation?	48	16	11	0	0
5	How do you rate ambience of the university for effective delivery of the academic programs?	48	16	11	0	0
6	How do you rate the courses in terms of their relevance to the latest technologies or future technologies?	49	16	10	0	0
7	How do you rate the programs based on the comfort of your ward in coping with the workload?	44	17	13	0	0
8	How do you rate the quality of teaching in the university?	51	12	12	0	0
9	How do you rate the outcomes that your ward has achieved from the courses	50	17	7	0	0
10	How do you rate the transparency of the evaluation system in the University?	49	20	6	0	0

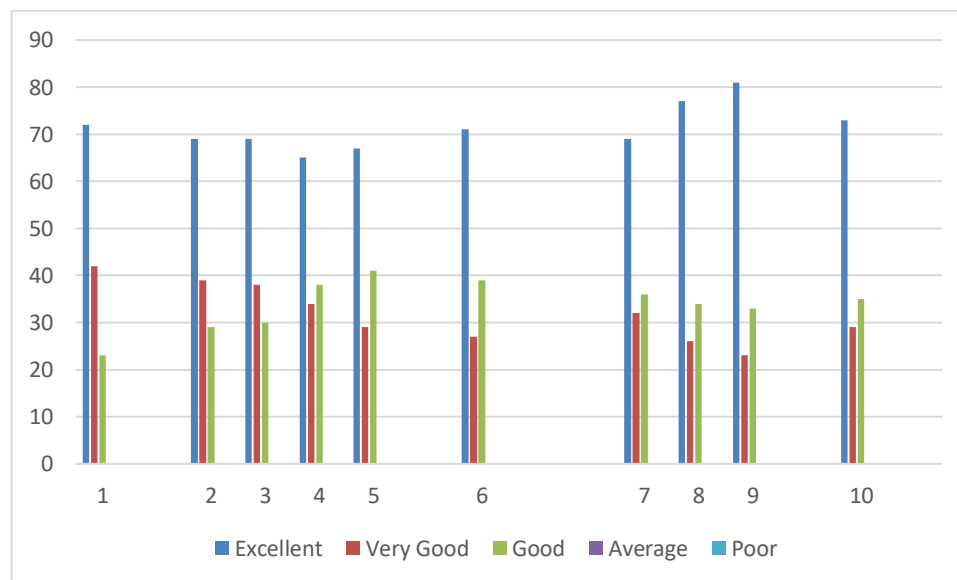




**BABA INSTITUTE OF TECHNOLOGY AND SCIENCES**  
 (Approved by AICTE New Delhi, NAAC Accredited, Affiliated to JNTU Kakinada, ISO 9001-2008 Certified)  
 Bakkannapalem Village, Madhurawada Post, Visakhapatnam – 530 048

ALUMNI FEEDBACK

SRL NO	Question	Excellent	Very Good	Good	Average	Poor
1	How do you rate relevance of the courses in relation to the program?	25	13	12	0	0
2	How do you rate the sequence of the courses included into the programs?	27	12	11	0	0
3	How do you rate the competencies in relation to the course content?	30	14	6	0	0
4	How do rate the sequence of the topics in the units?	26	17	7	0	0
5	Rate the offering of the in relation to the specialization streams?	32	13	5	0	0
6	How do you rate the offering of the electives in relation to the Technological advancements?	31	15	4	0	0
7	How do you rate the courses which are skills related suiting to the Industry included into the programs?	29	13	8	0	0
8	How do you rate the domain used for designing the experiments in terms of the suitability of the Tools to the domain?	26	14	10	0	0
9	How do you rate the experiments in terms of their relevance to the real life application?	28	12	10	0	0
10	How do you rate the courses that you have learnt in relation to your current Job	26	16	8	0	0

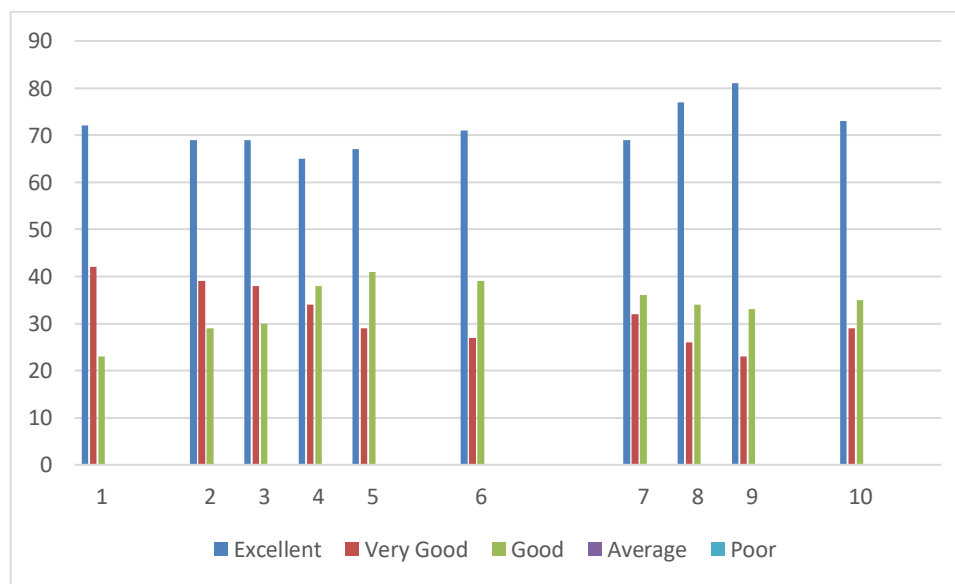




**BABA INSTITUTE OF TECHNOLOGY AND SCIENCES**  
 (Approved by AICTE New Delhi, NAAC Accredited, Affiliated to JNTU Kakinada, ISO 9001-2008 Certified)  
 Bakkannapalem Village, Madhurawada Post, Visakhapatnam – 530 048

STUDENTS FEEDBACK

SRL NO	Question	Excellent	Very Good	Good	Average	Poor
1	How do you rate the sequence of the Courses that you have studied are in sequence to what you have studied in the previous semester?	72	42	23	0	0
2	How do you rate the syllabus of the courses that you have studied in relation to the competencies expected out of the course?	69	39	29	0	0
3	How do you rate the relevance of the units in Syllabus relevant to the course?	69	38	30	0	0
4	How do you rate the sequence of the units in the course?	65	34	38	0	0
5	How do you rate the allocation of the credits to the courses?	67	29	41	0	0
6	How do you rate the distribution of the contact hours among the course components (L-T-P)?	71	27	39	0	0
7	How do you rate the offering of the electives in terms of their relevance to the specialization streams?	69	32	36	0	0
8	How do you rate the electives offered in relation to the Technological advancements?	77	26	34	0	0
9	How do you rate the relevance of the Text Books and reference books by their International recognition to the Courses?	81	23	33	0	0
10	Rate the Size of syllabus in terms of the load on the student	73	29	35	0	0

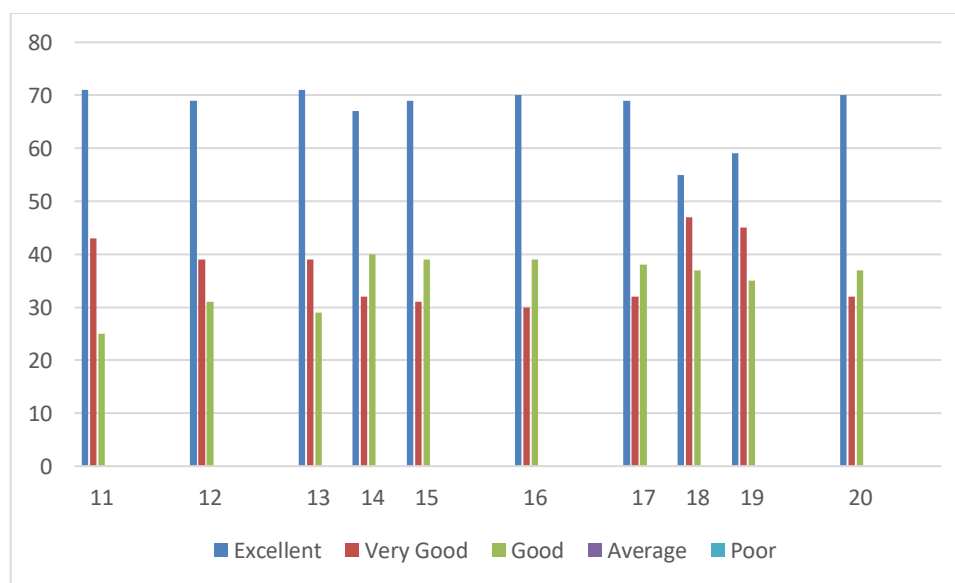




**BABA INSTITUTE OF TECHNOLOGY AND SCIENCES**  
 (Approved by AICTE New Delhi, NAAC Accredited, Affiliated to JNTU Kakinada, ISO 9001-2008 Certified)  
 Bakkannapalem Village, Madhurawada Post, Visakhapatnam – 530 048

STUDENTS FEEDBACK

SRL NO	Question	Excellent	Very Good	Good	Average	Poor
11	Rate the courses in terms of extra learning or self learning considering the design of the courses	71	43	25	0	0
12	Rate the courses in terms of sequence of offering considering whether the preceding courses have been covered.	69	39	31	0	0
13	How do you Rate the loading of the courses in a semester?	71	39	29	0	0
14	How do you rate the evaluation scheme designed for each of the course?	67	32	40	0	0
15	How do you rate the objectives stated for each of the course?	69	31	39	0	0
16	How do you rate competencies expected out of the course?	70	30	39	0	0
17	How do you rate the composition of the courses in terms of Basic science, Engineering science, Humanities, Discipline core, discipline elective, open elective, project etc.?	69	32	38	0	0
18	How do you rate the percentage of courses having LAB components?	55	47	37	0	0
19	How do you rate the domain used for designing the experiments for the LAB components?	59	45	35	0	0
20	How do you rate the experiments in relation to the real life Applications?	70	32	37	0	0

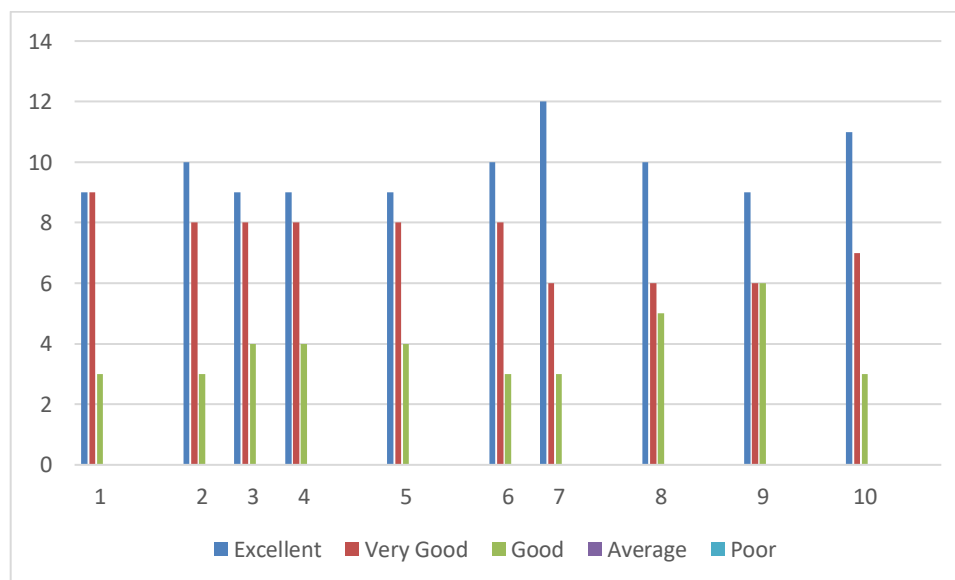




**BABA INSTITUTE OF TECHNOLOGY AND SCIENCES**  
 (Approved by AICTE New Delhi, NAAC Accredited, Affiliated to JNTU Kakinada, ISO 9001-2008 Certified)  
 Bakkannapalem Village, Madhurawada Post, Visakhapatnam – 530 048

TEACHERS FEEDBACK

SRL NO	Question	Excellent	Very Good	Good	Average	Poor
1	How do you rate the sequence of the Courses that you have studied are in sequence to what you have studied in the previous semester?	9	9	3	0	0
2	How do you rate the syllabus of the courses that you have studied in relation to the competencies expected out of the course?	10	8	3	0	0
3	How do you rate the relevance of the units in Syllabus relevant to the course?	9	8	4	0	0
4	How do you rate the sequence of the units in the course?	9	8	4	0	0
5	How do you rate the allocation of the credits to the courses?	9	8	4	0	0
6	How do you rate the distribution of the contact hours among the course components (L-T-P)?	10	8	3	0	0
7	How do you rate the offering of the electives in terms of their relevance to the specialization streams?	12	6	3	0	0
8	How do you rate the electives offered in relation to the Technological advancements?	10	6	5	0	0
9	How do you rate the relevance of the Text Books and reference books by their International recognition to the Courses?	9	6	6	0	0
10	Rate the Size of syllabus in terms of the load on the student	11	7	3	0	0





# BABA INSTITUTE OF TECHNOLOGY AND SCIENCES

Approved by AICTE New Delhi, NAAC Accredited, Affiliated to JNTU Kakinada, ISO 9001-2008 Certified)  
Bakkannapalem Village, Madhurawada Post, Visakhapatnam – 530 048

## TEACHERS FEEDBACK

SRL NO	Question	Excellent	Very Good	Good	Average	Poor
11	Rate the courses in terms of extra learning or self learning considering the design of the courses	9	6	6	0	0
12	Rate the courses in terms of sequence of offering considering whether the preceding courses have been covered.	11	5	5	0	0
13	How do you Rate the loading of the courses in a semester?	11	7	3	0	0
14	How do you rate the evaluation scheme designed for each of the course?	8	9	4	0	0
15	How do you rate the objectives stated for each of the course?	10	8	3	0	0
16	How do you rate competencies expected out of the course?	11	6	4	0	0
17	How do you rate the composition of the courses in terms of Basic science, Engineering science, Humanities, Discipline core, discipline elective, open elective, project etc.?	11	6	4	0	0
18	How do you rate the percentage of courses having LAB components?	10	6	5	0	0
19	How do you rate the domain used for designing the experiments for the LAB components?	8	8	5	0	0
20	How do you rate the experiments in relation to the real life Applications?	8	8	5	0	0

